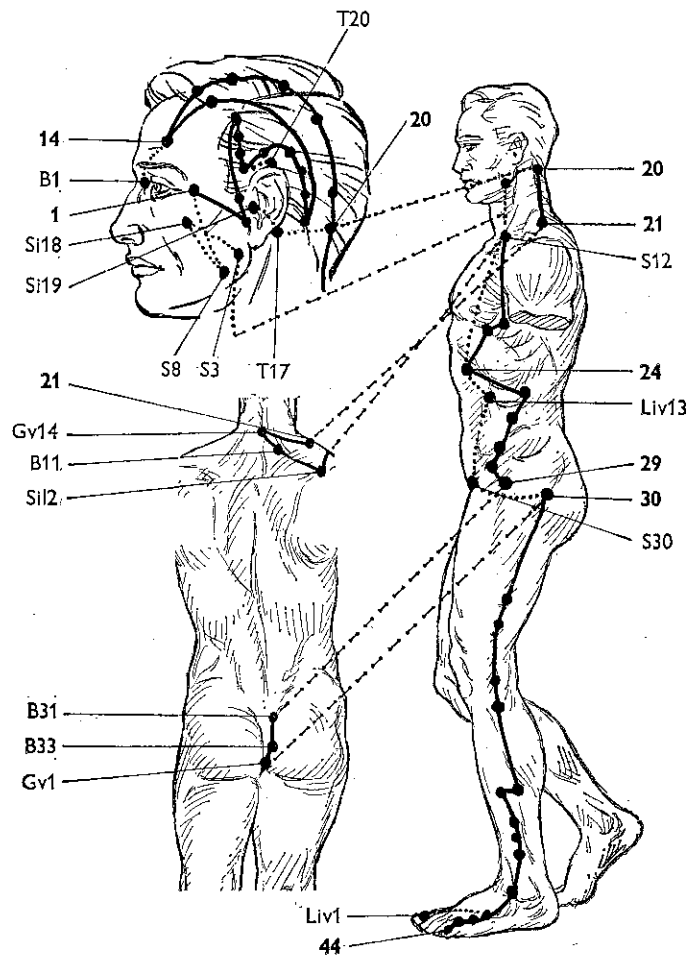


THE MERIDIANS OF ACUPUNCTURE

FELIX MANN

MB, BChir (Cambridge), LMCC



WILLIAM HEINEMANN MEDICAL BOOKS LTD

ILLUSTRATIONS OF THE MERIDIANS

The continuous lines represent the course of the main, connecting, muscle, divergent or extra meridians.

The finely dotted lines represent the branches, or in some instances the deeper internal course of the meridians. They also represent the connection of coupled meridians.

The heavily dotted lines represent the main meridian in the illustrations of the divergent meridians.

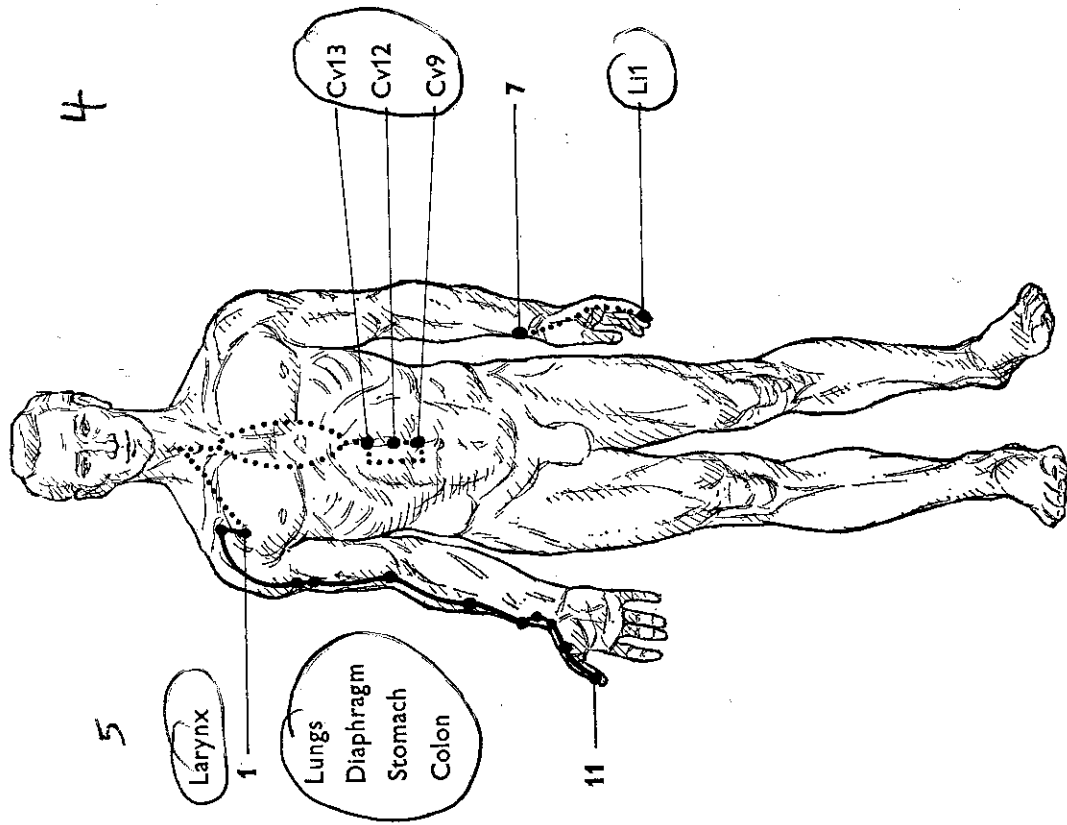
The broken lines represent the continuation from one drawing to another of the various meridians.

The acupuncture points on the main meridians are numbered in heavy type at a few of their representative points. Where the main meridian or its branches go to acupuncture points on other meridians, this has been indicated in all instances by lettering and numbering in lighter type. The connecting points of the connecting meridians have also been lettered and numbered in light type.

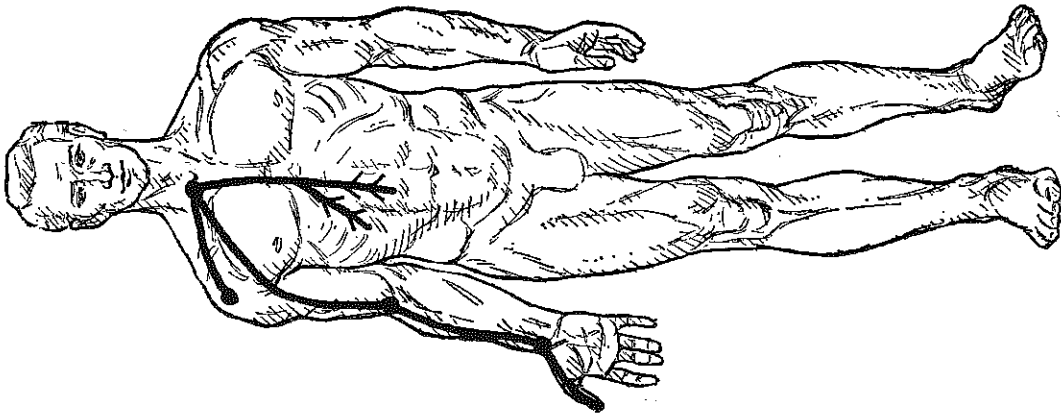
The meeting points of the muscle meridians have not been labeled.

The words alongside the illustrations, indicate the course, described in greater detail in the text of this book, of some of the meridians.

1 + 9 = 10 x 2 = 20

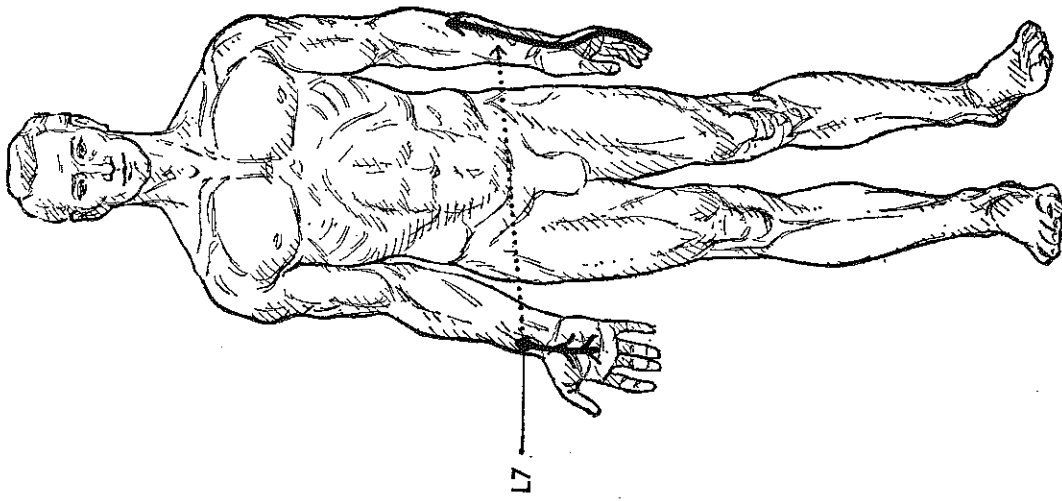


LUNG MAIN MERIDIAN



LUNG MUSCLE MERIDIAN

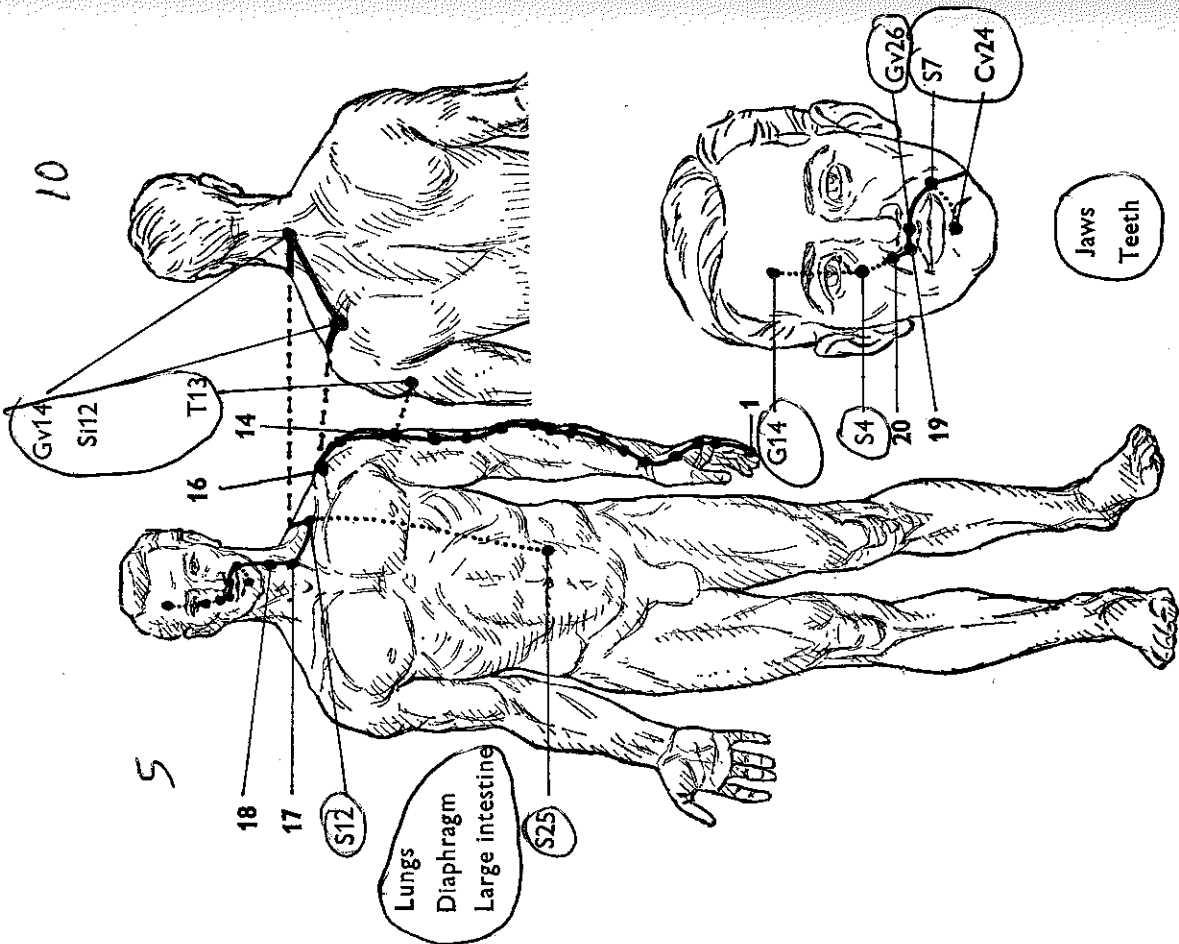
123



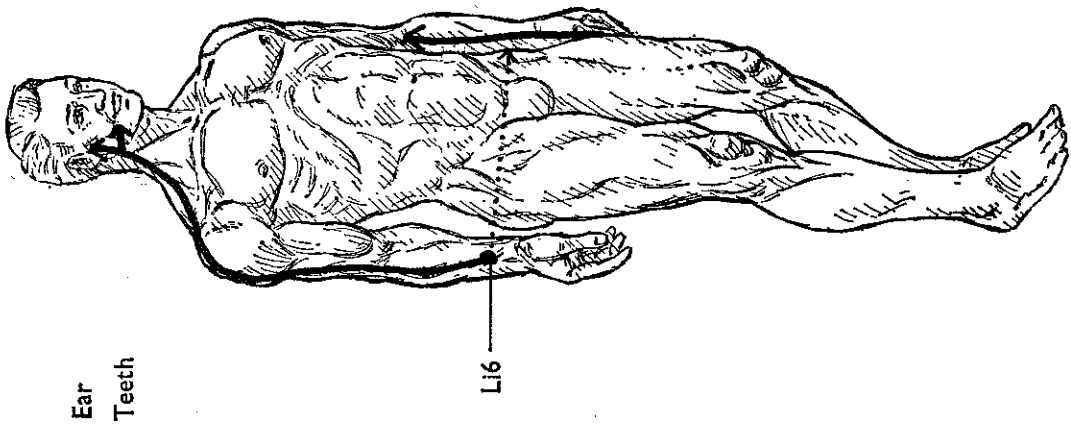
LUNG CONNECTING MERIDIAN

122

1 + 15 = 16 x 2 = 32



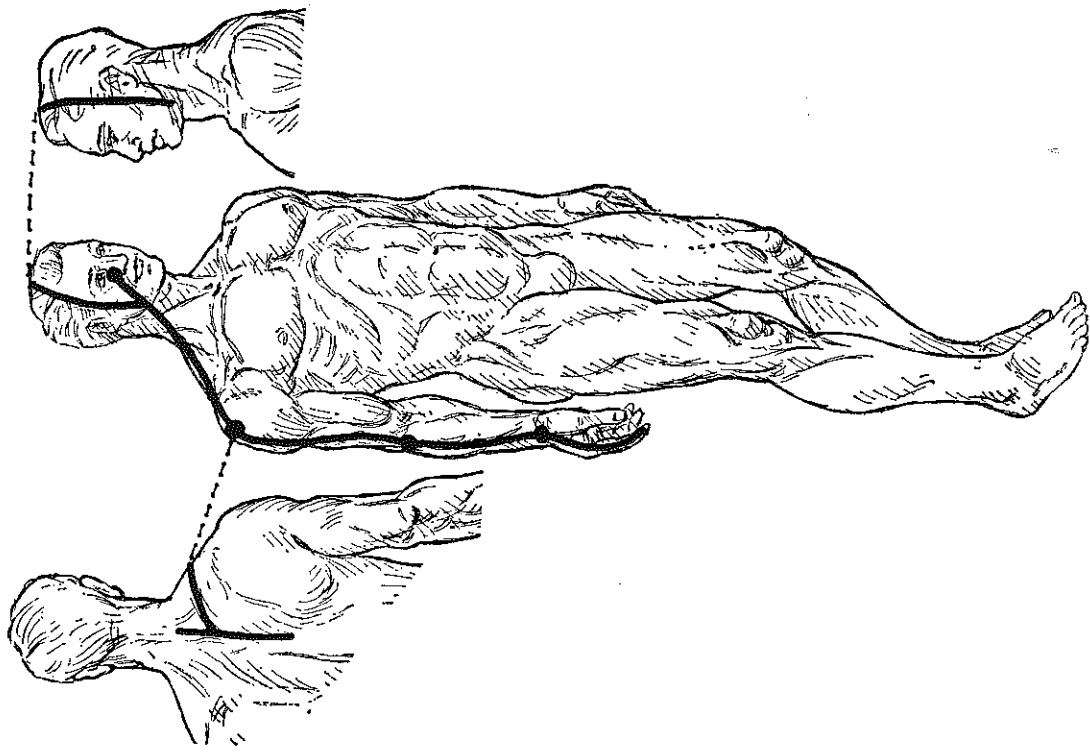
LARGE INTESTINE MAIN MERIDIAN



Ear
Teeth

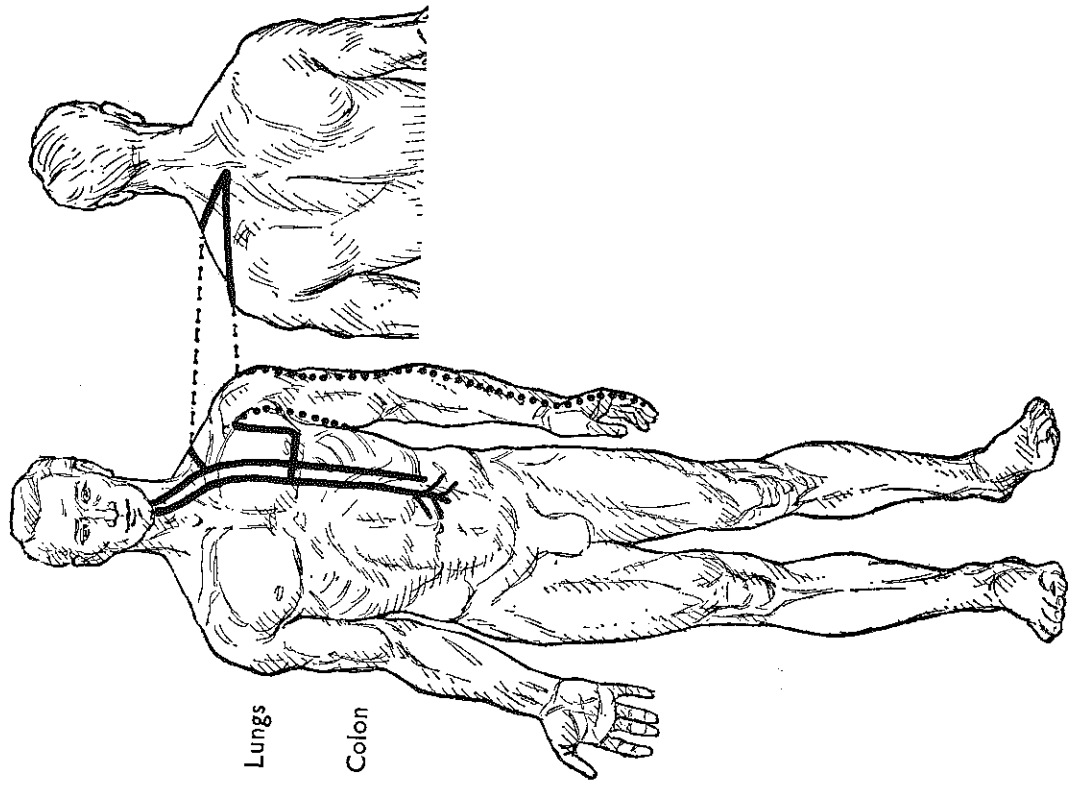
Li6

LARGE INTESTINE CONNECTING MERIDIAN



LARGE INTESTINE MUSCLE MERIDIAN

126



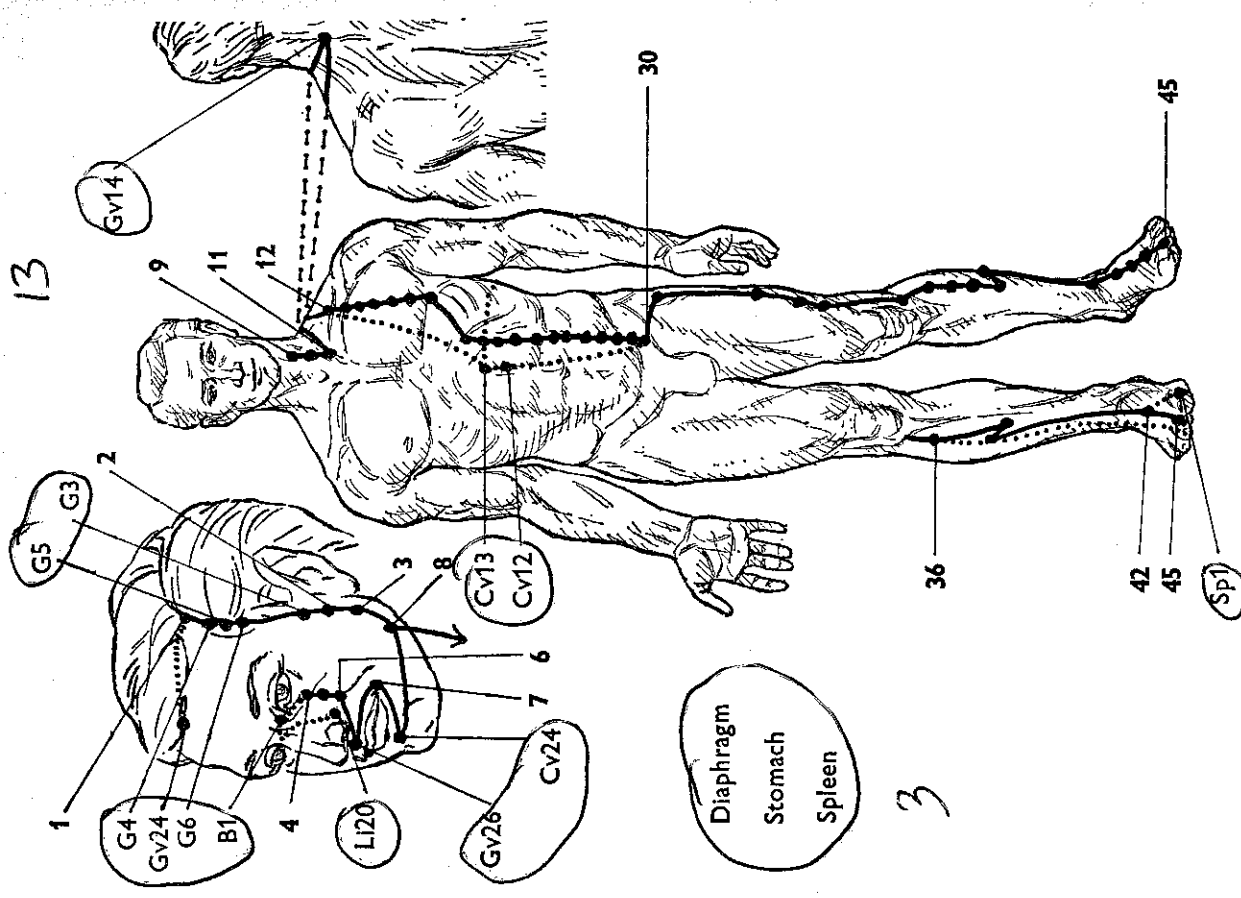
Lungs

Colon

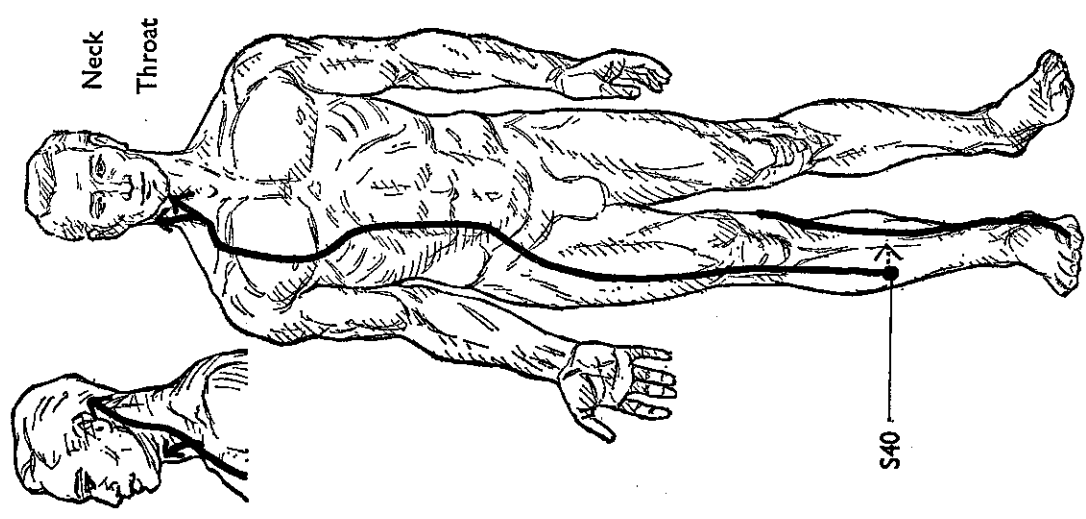
LARGE INTESTINE AND LUNG DIVERGENT MERIDIANS

127

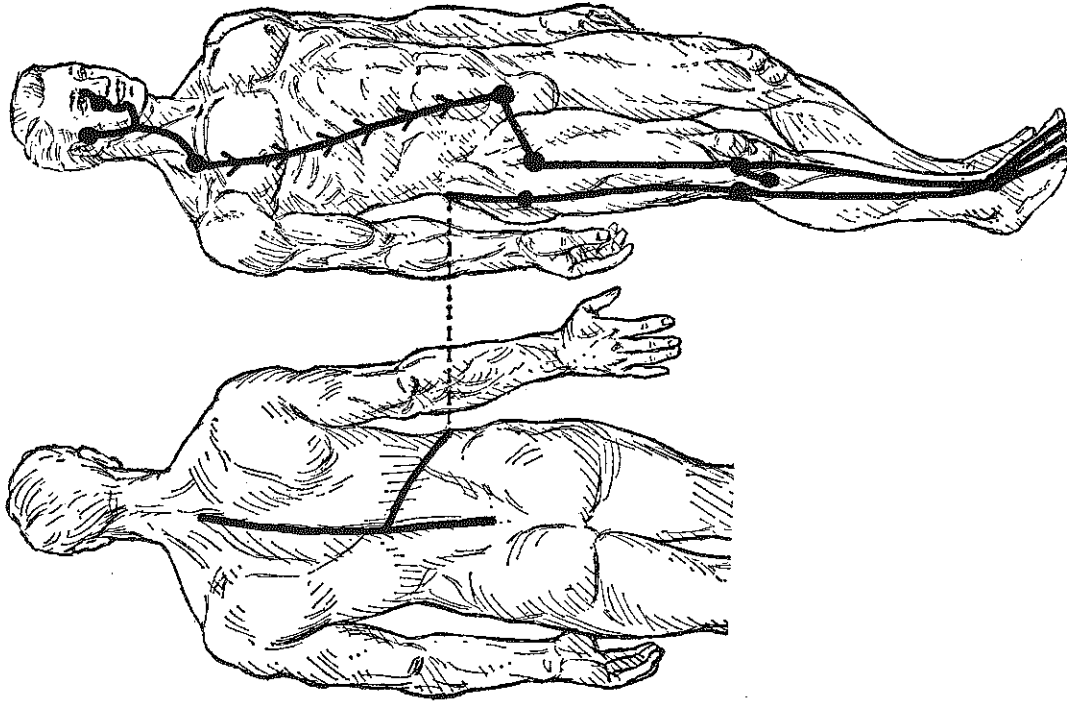
1216-1180231



STOMACH MAIN MERIDIAN

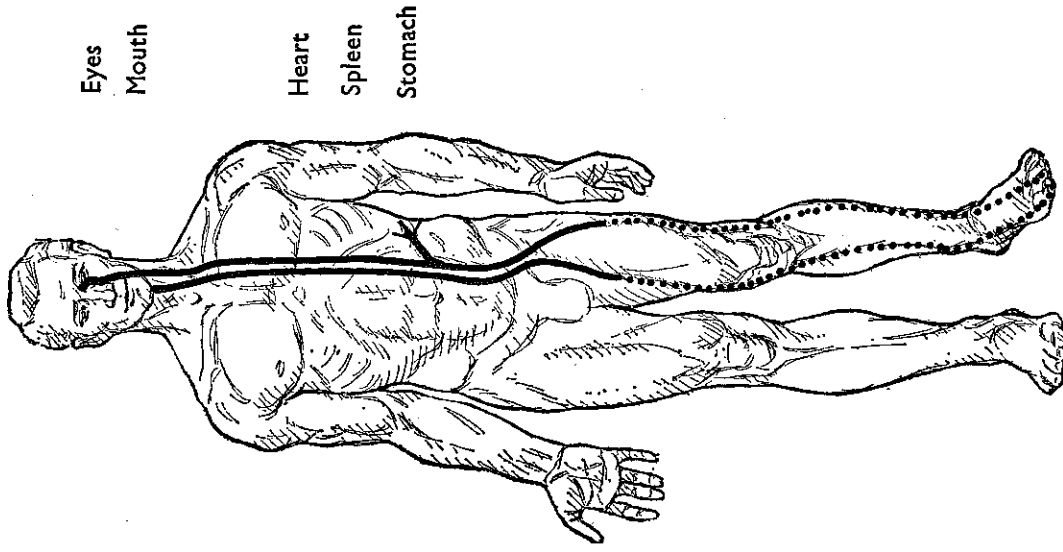


STOMACH CONNECTING MERIDIAN



STOMACH MUSCLE MERIDIAN

130



Eyes
Mouth

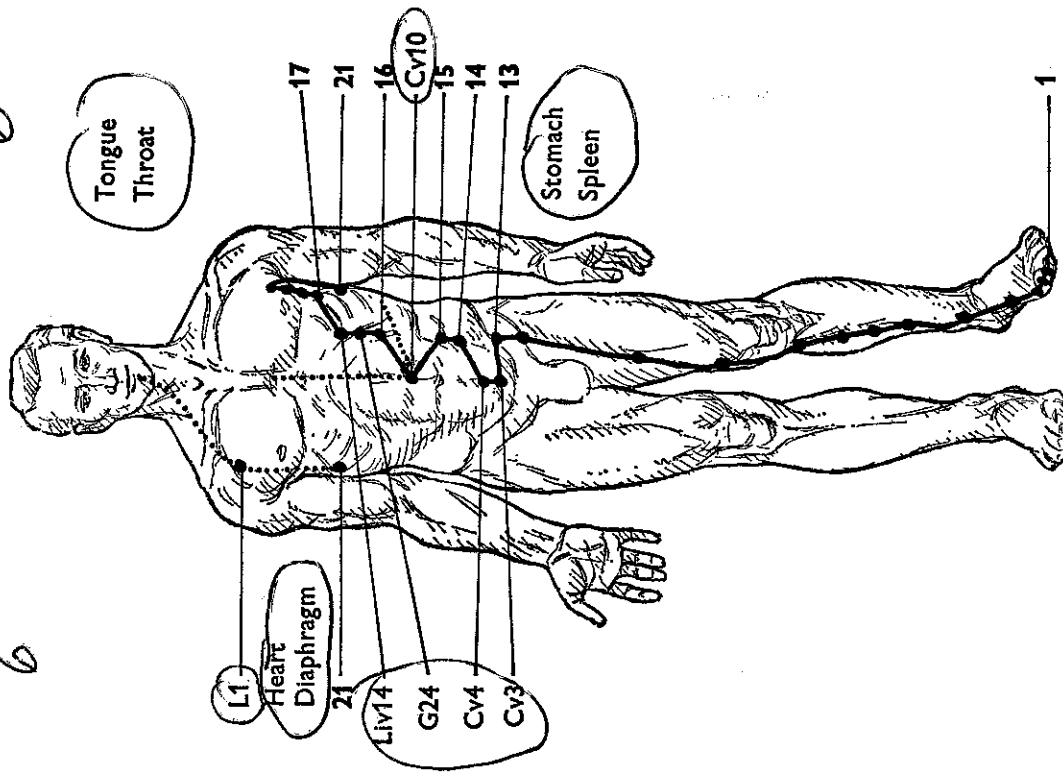
Heart
Spleen
Stomach

STOMACH AND SPLEEN DIVERGENT MERIDIANS

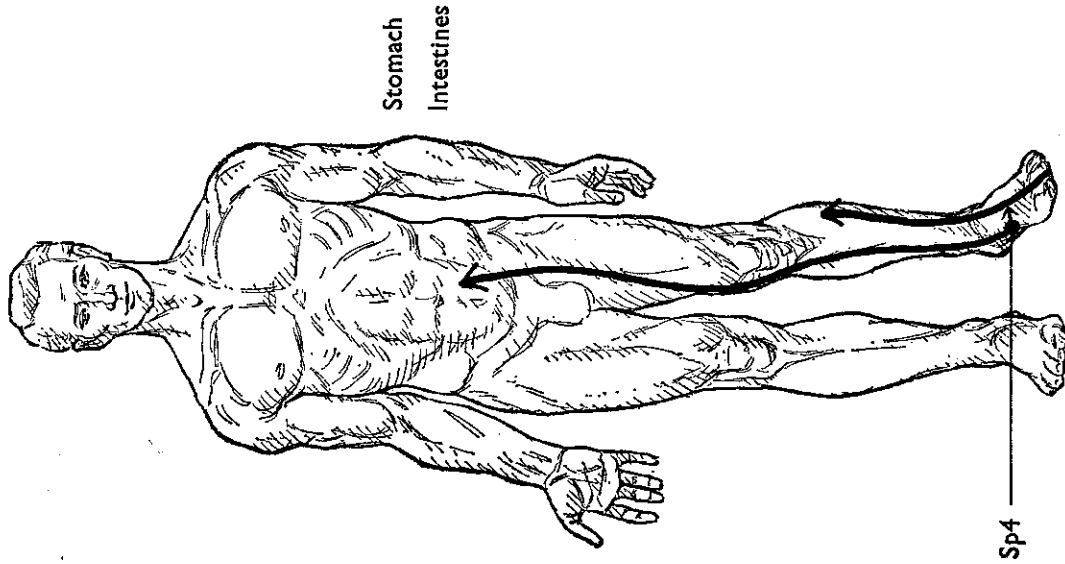
131

1+12=13 x2 = 26

6

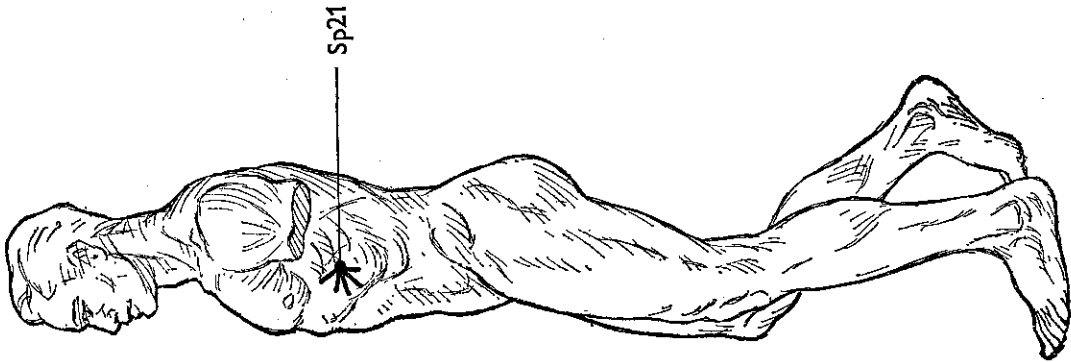


SPLEEN MAIN MERIDIAN



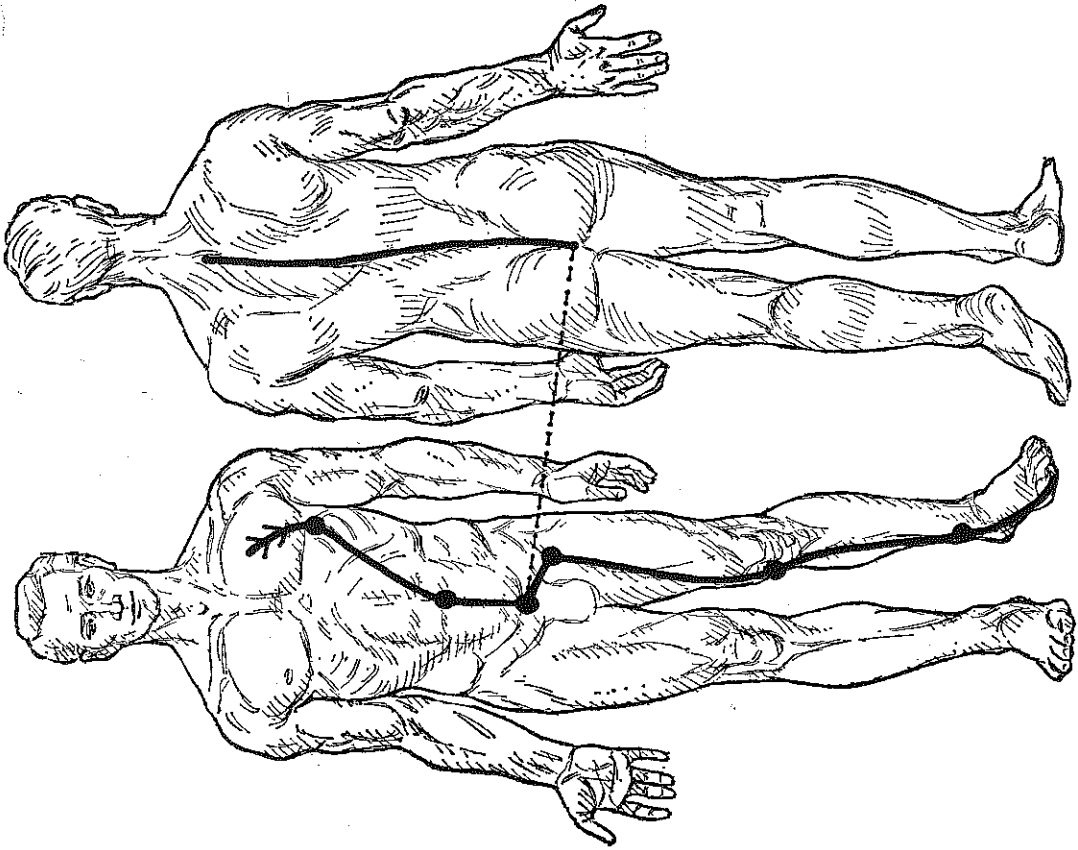
SPLEEN CONNECTING MERIDIAN

| +14#15 x2=30



SPLEEN GREAT CONNECTING MERIDIAN

134

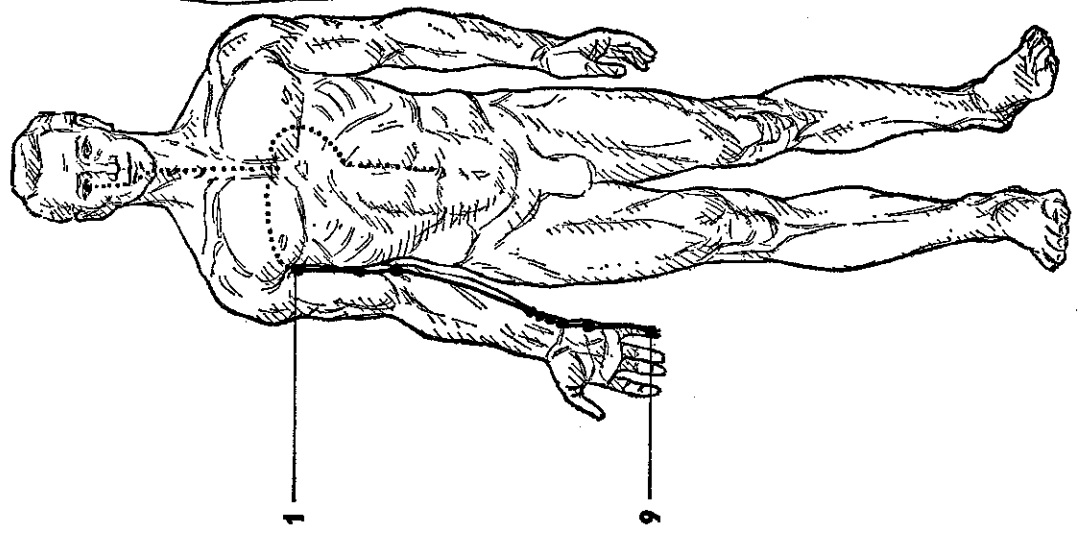


SPLEEN MUSCLE MERIDIAN

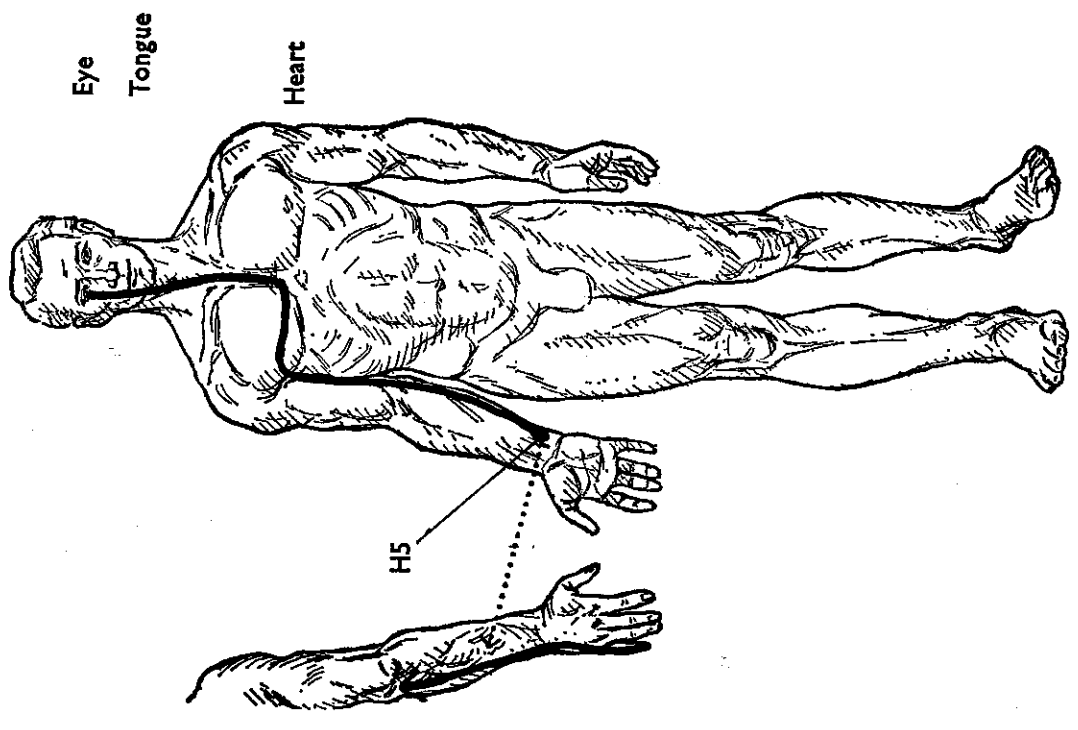
135

146 x 7 x 2 = 14

6
Eye
Throat
Heart
Great vessels
Diaphragm
Small Intestine



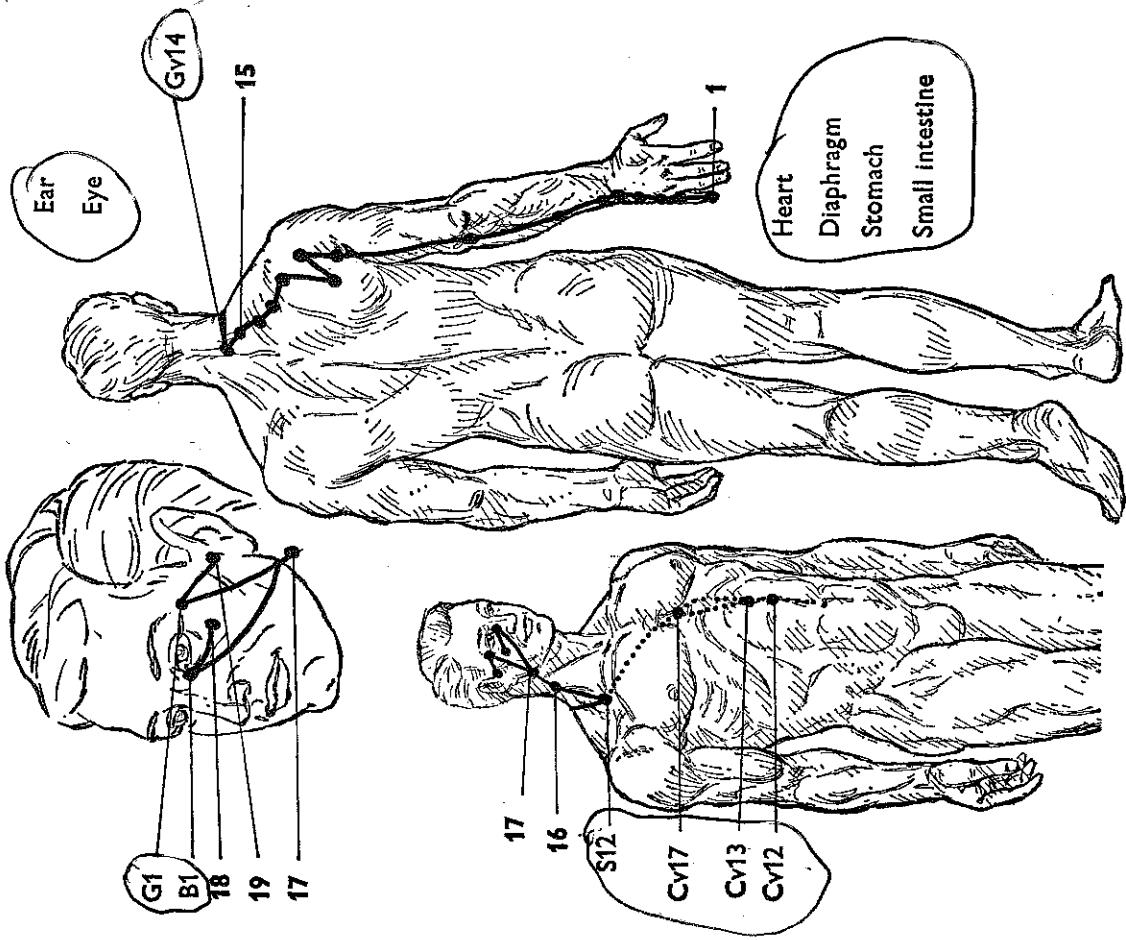
HEART MAIN MERIDIAN



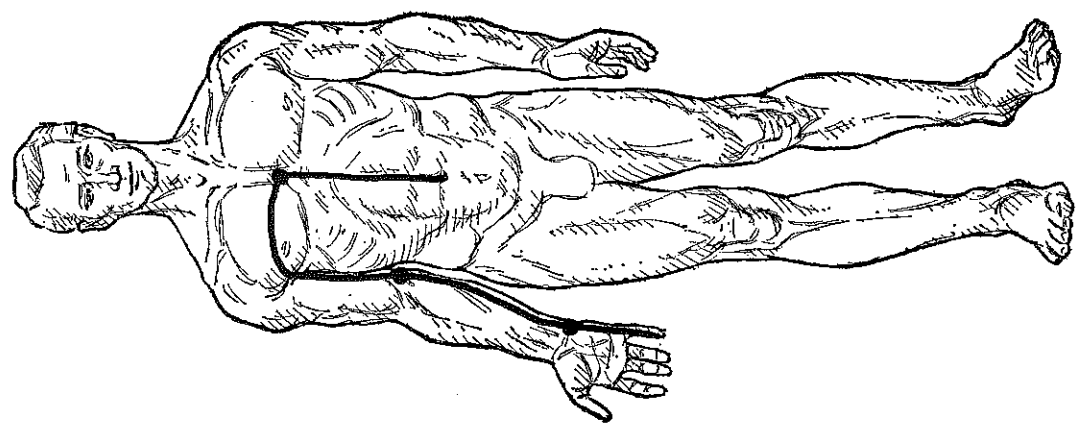
HEART CONNECTING MERIDIAN

1+13=14 12=28

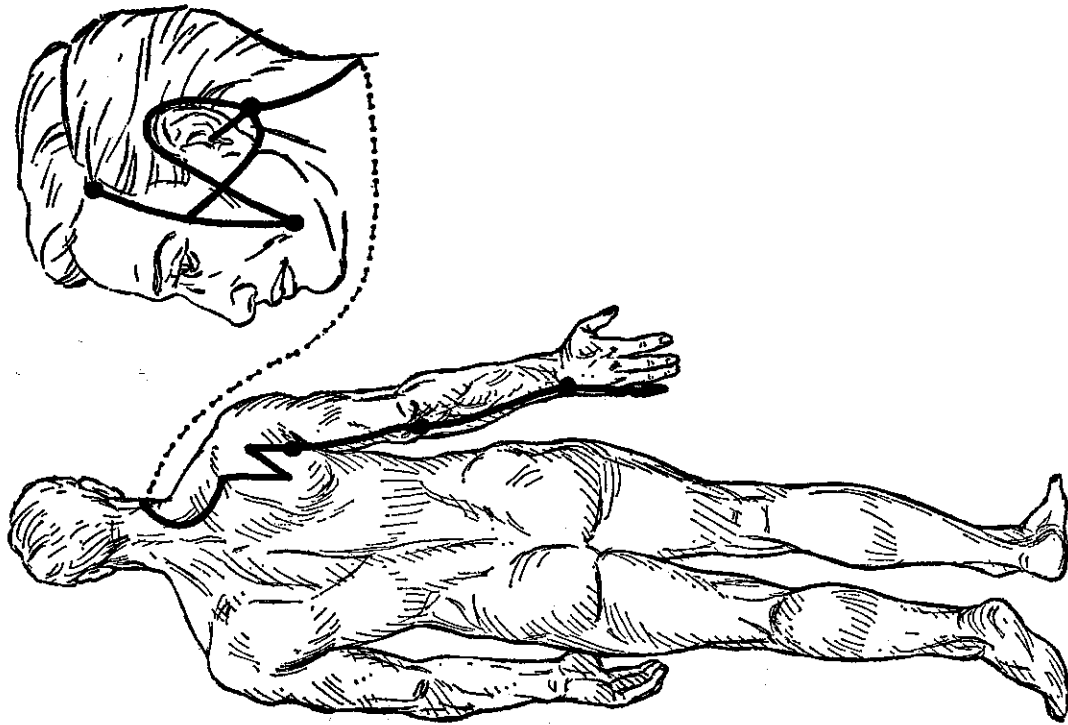
7
6



SMALL INTESTINE MAIN MERIDIAN

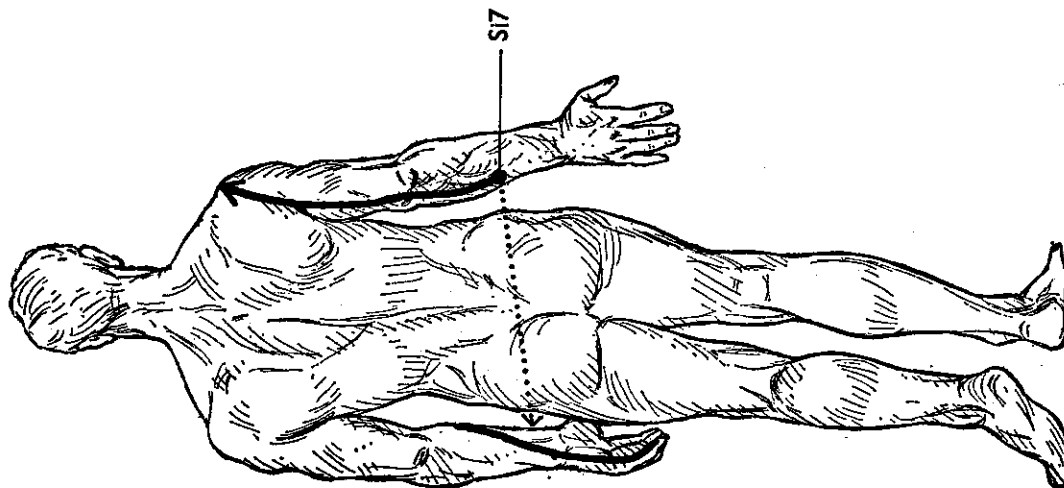


HEART MUSCLE MERIDIAN



SMALL INTESTINE MUSCLE MERIDIAN

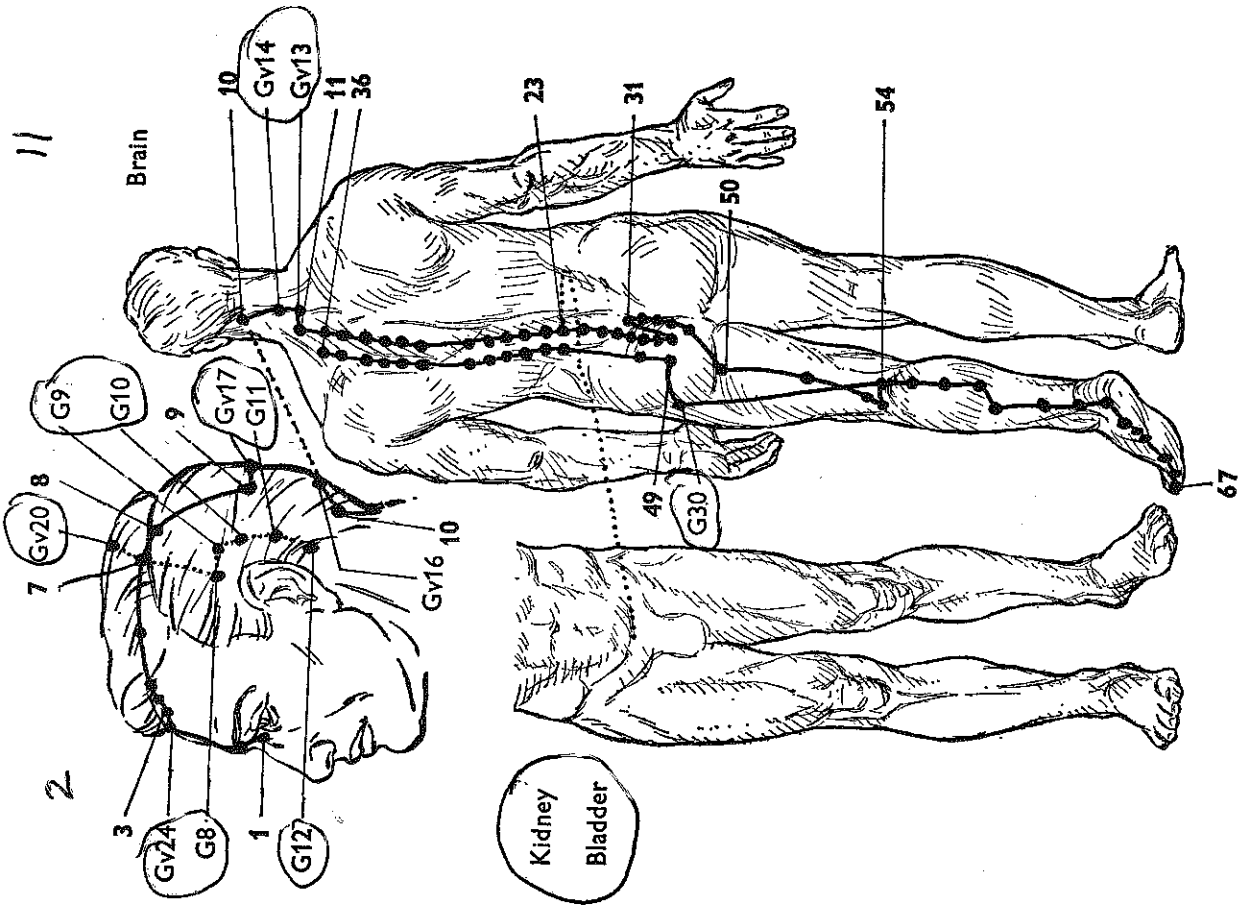
141



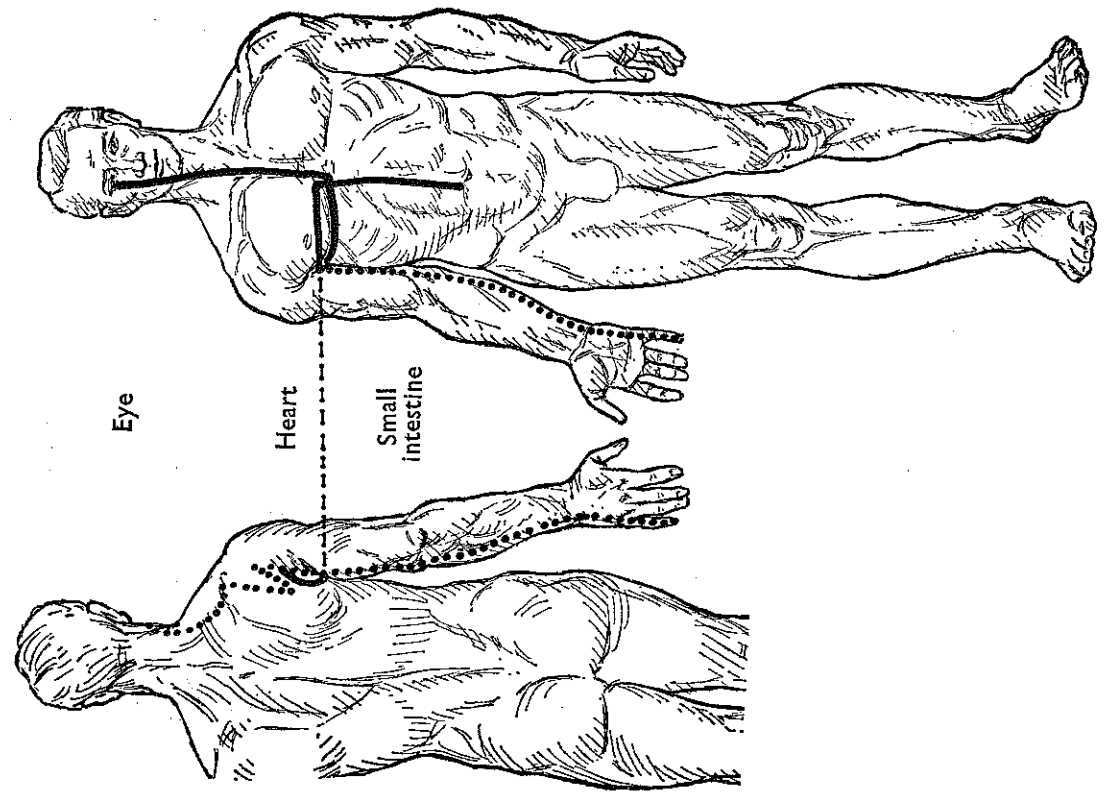
SMALL INTESTINE CONNECTING MERIDIAN

140

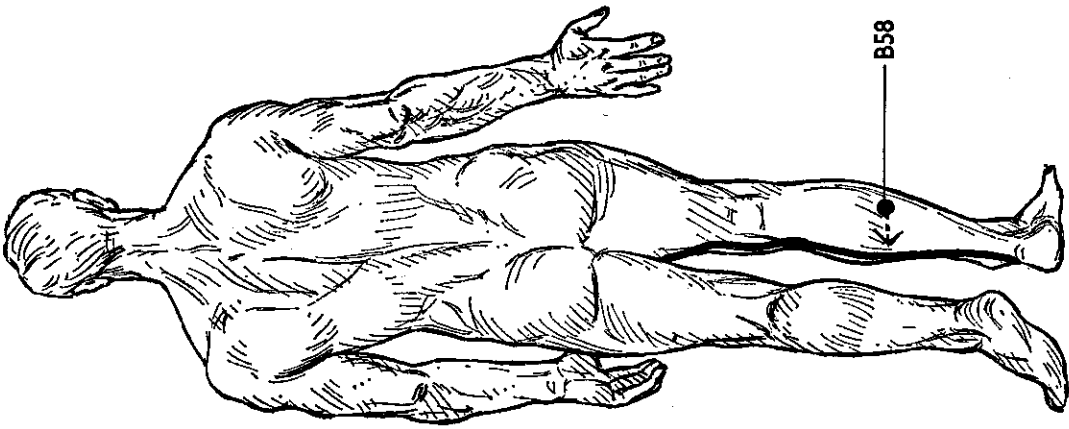
1 + 13 = 14, 14 x 2 = 28



BLADDER MAIN MERIDIAN

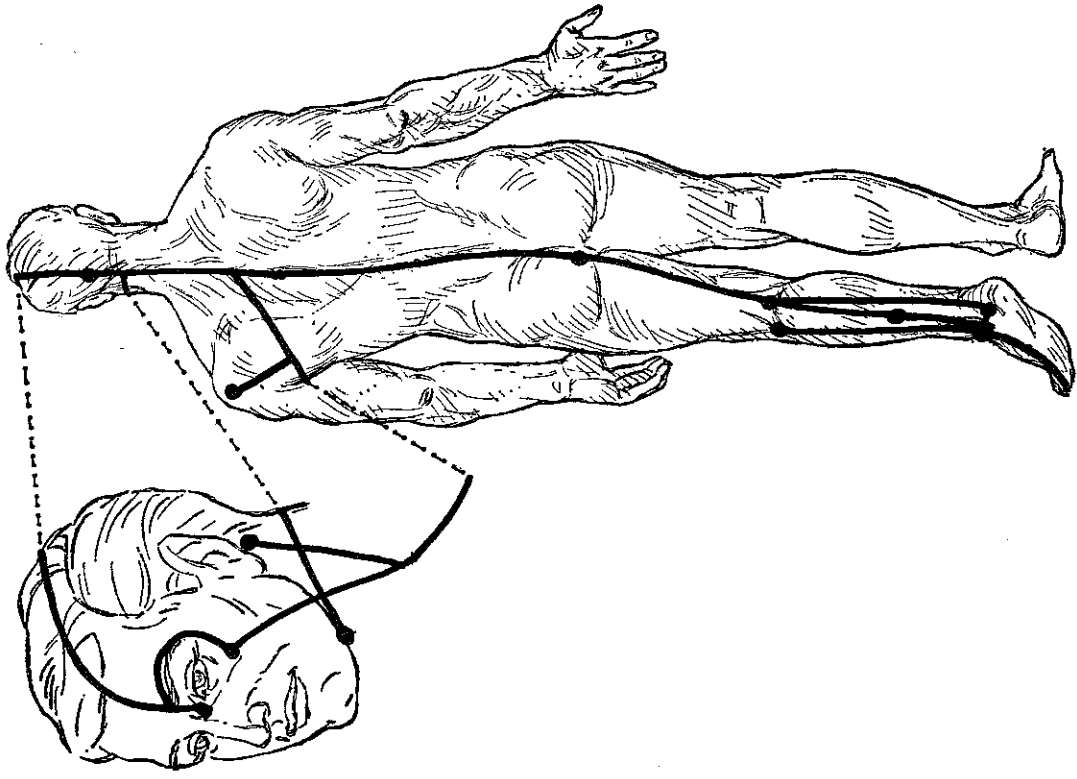


SMALL INTESTINE AND HEART DIVERGENT MERIDIANS



BLADDER CONNECTING MERIDIAN

144

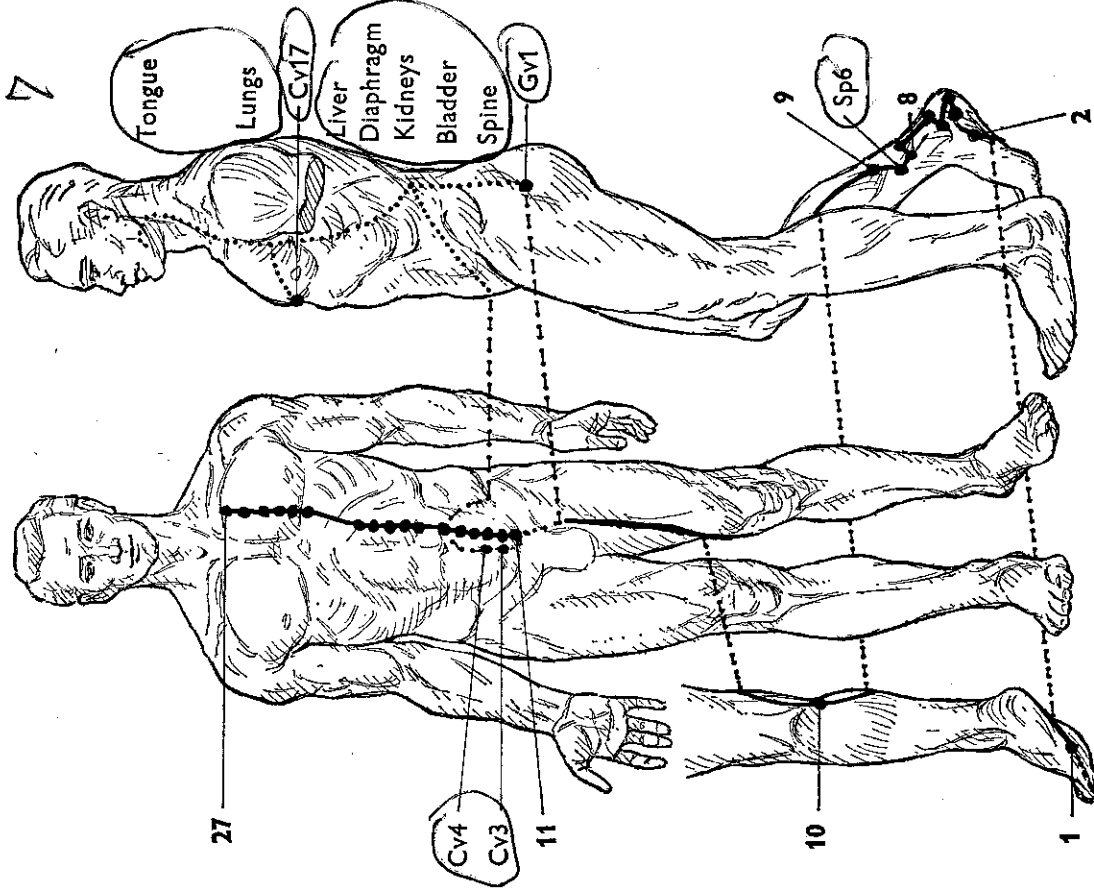


BLADDER MUSCLE MERIDIAN

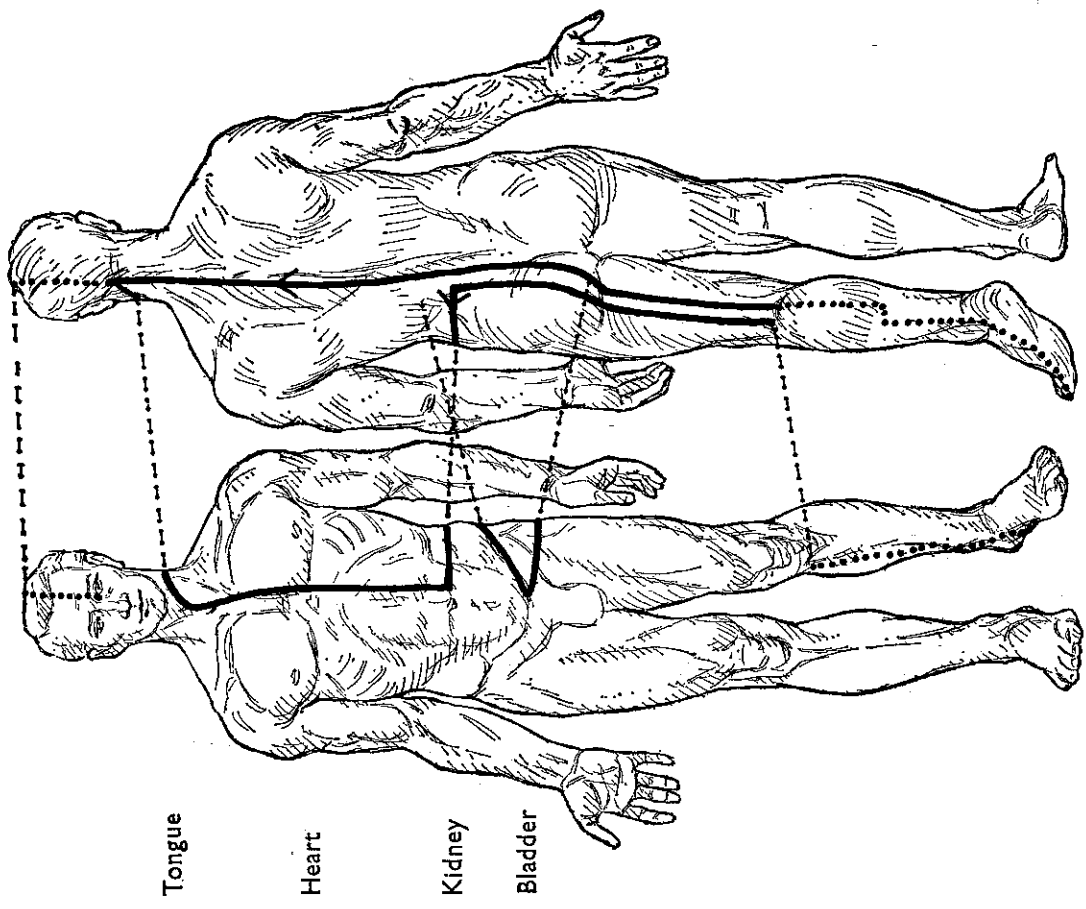
145

1 + 12 = 13 x 2 = 26

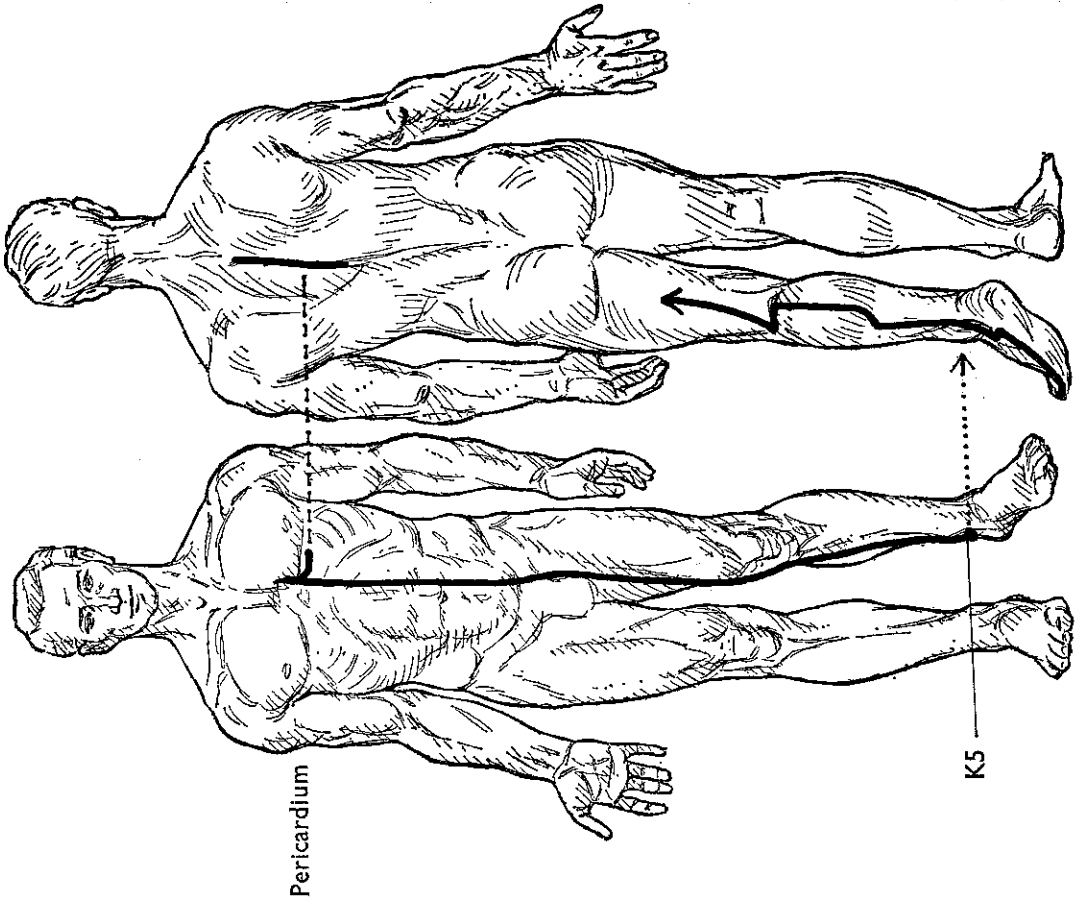
5



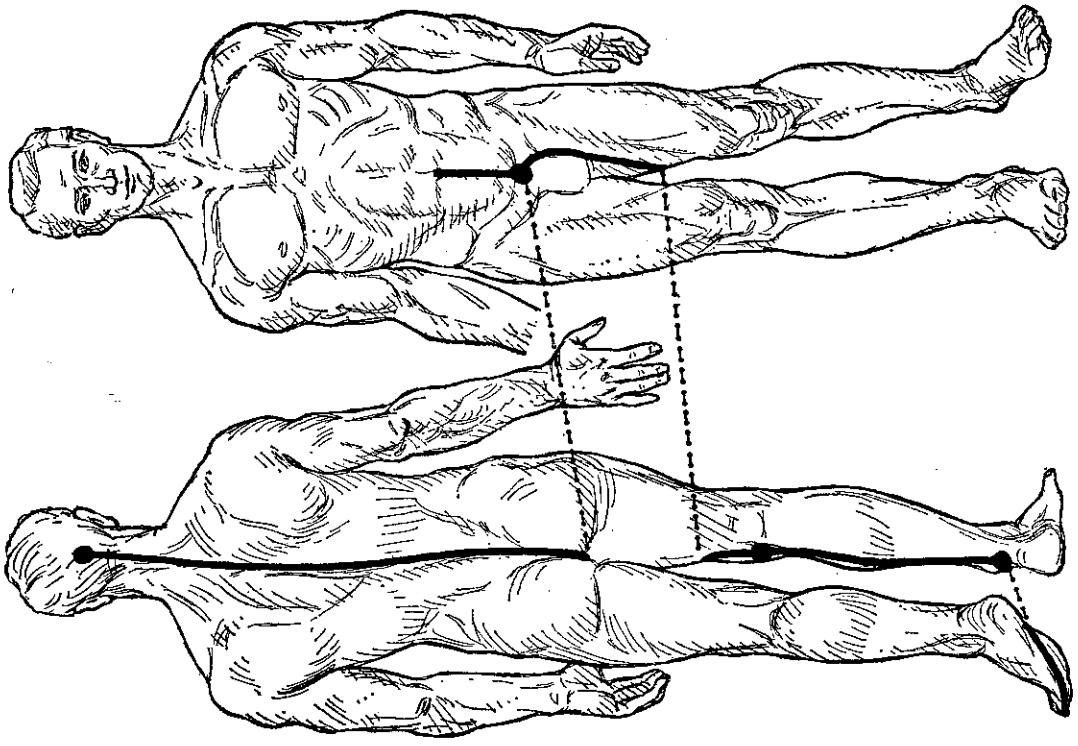
KIDNEY MAIN MERIDIAN



BLADDER AND KIDNEY DIVERGENT MERIDIANS

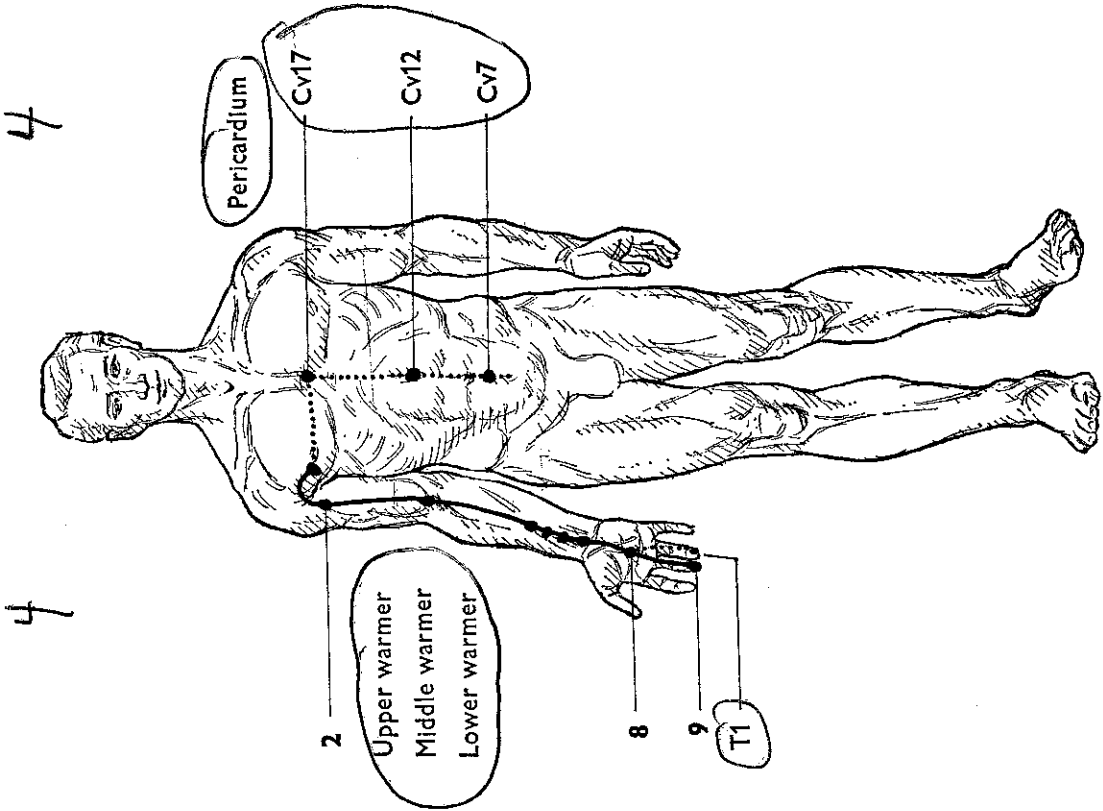


KIDNEY CONNECTING MERIDIAN

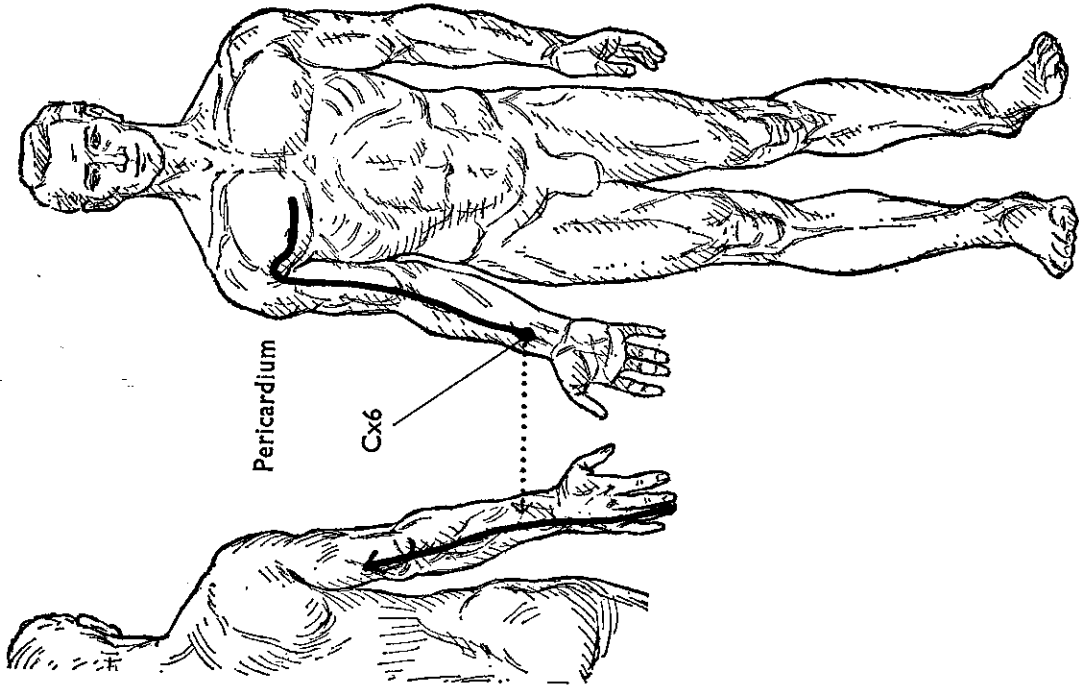


KIDNEY MUSCLE MERIDIAN

148 = 9 x 2 = 18

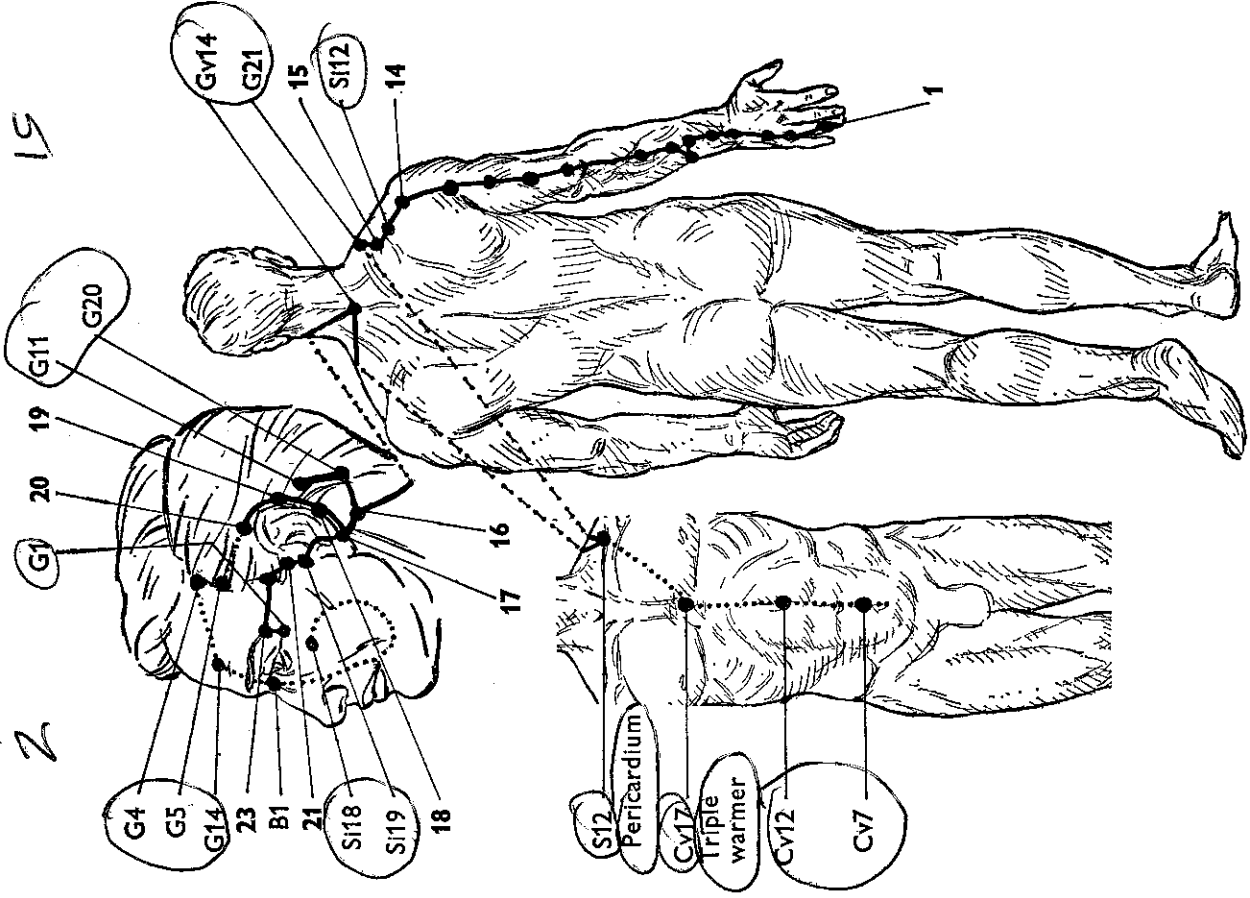


CIRCULATION-SEX MAIN MERIDIAN

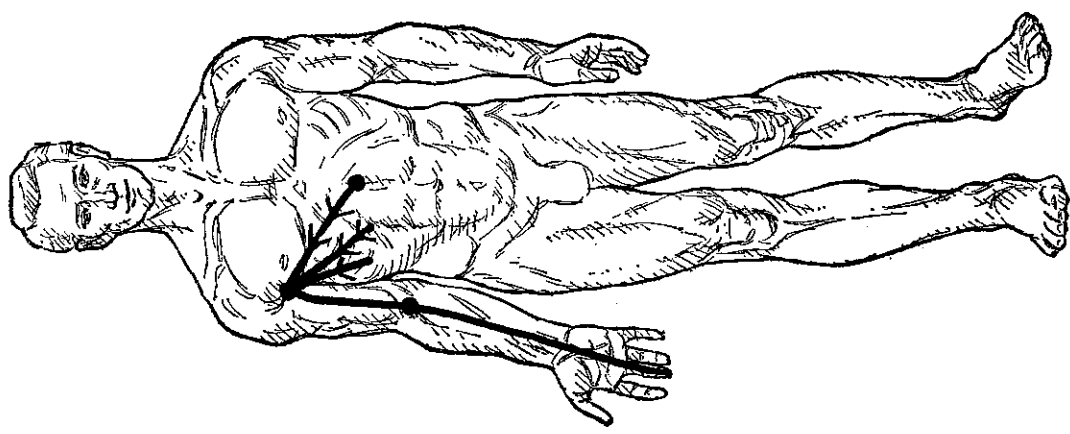


CIRCULATION-SEX CONNECTING MERIDIAN

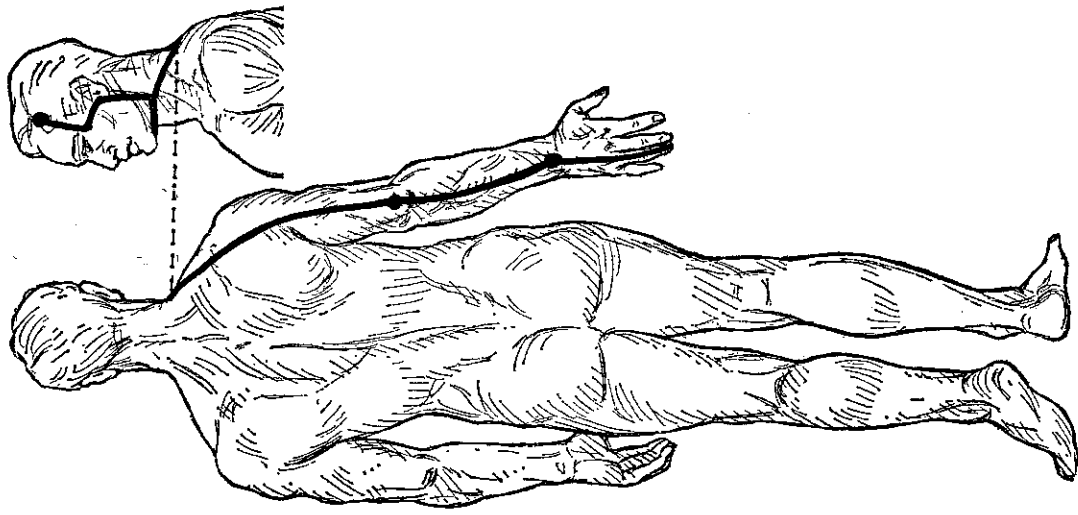
1617=18 N2=36



TRIPLE WARMER MAIN MERIDIAN

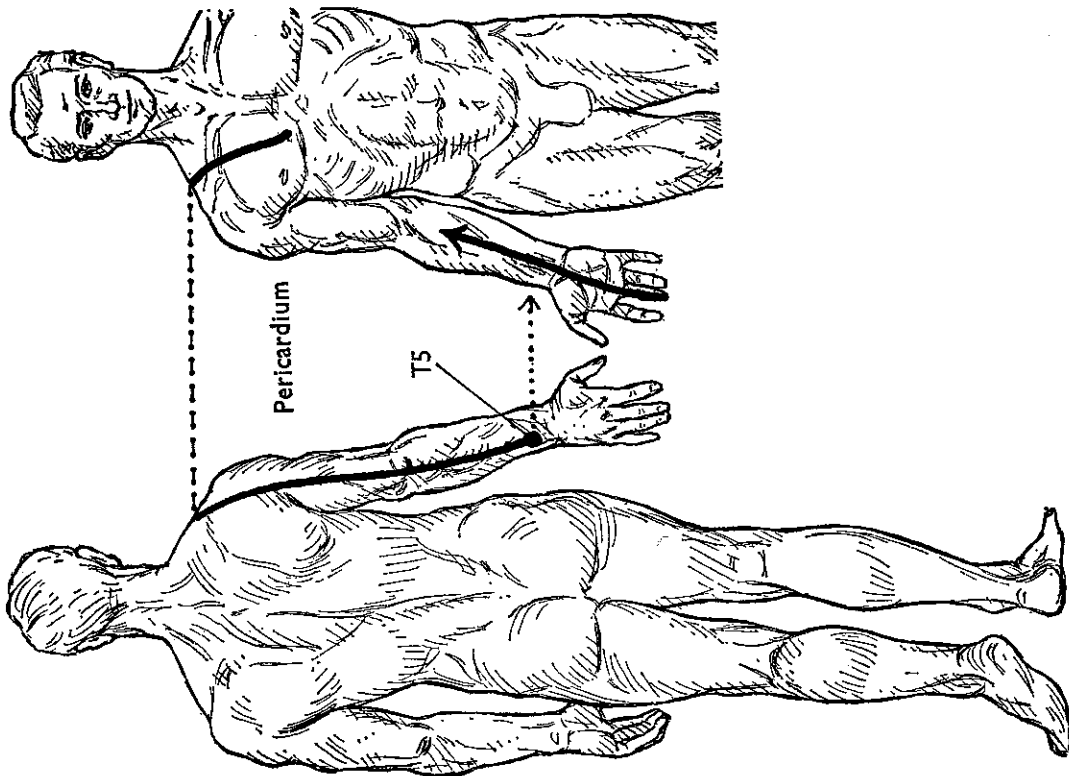


CIRCULATION-SEX MUSCLE MERIDIAN



TRIPLE WARMER MUSCLE MERIDIAN

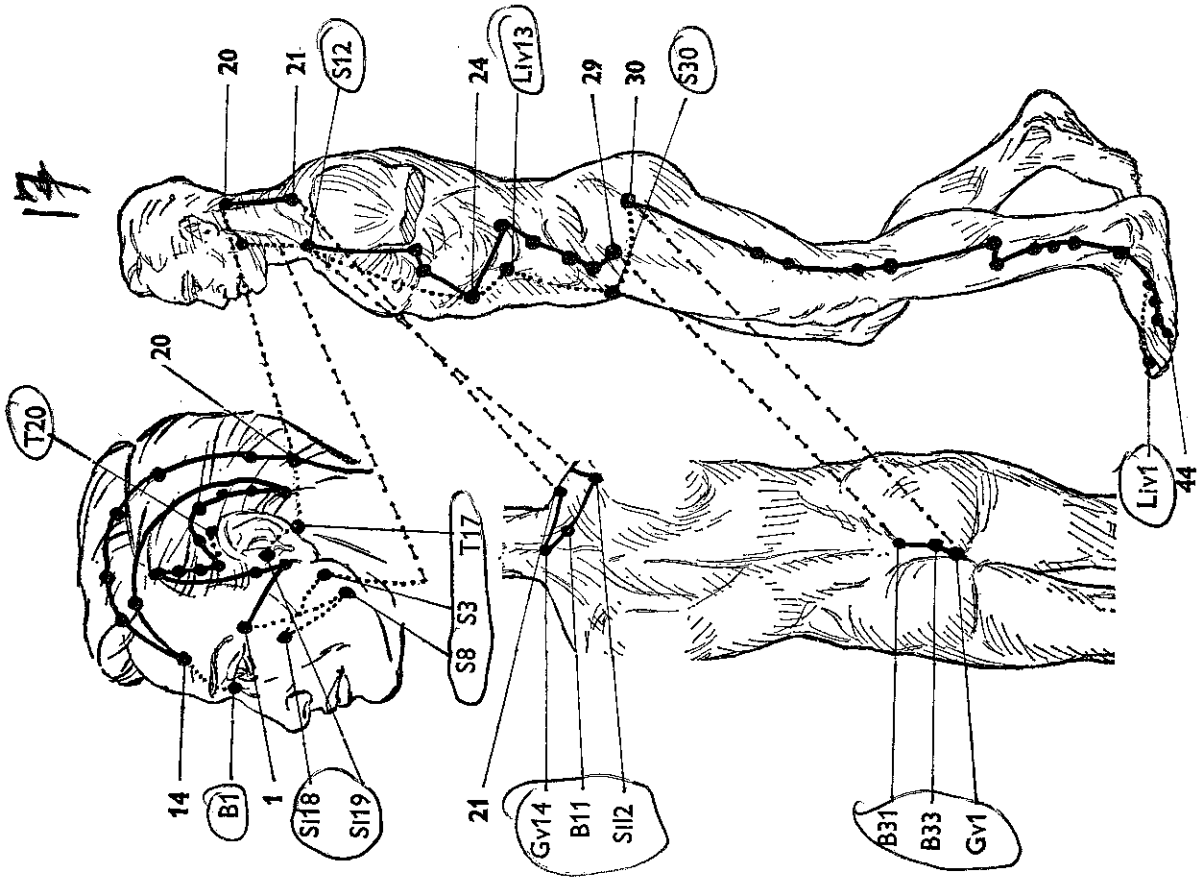
155



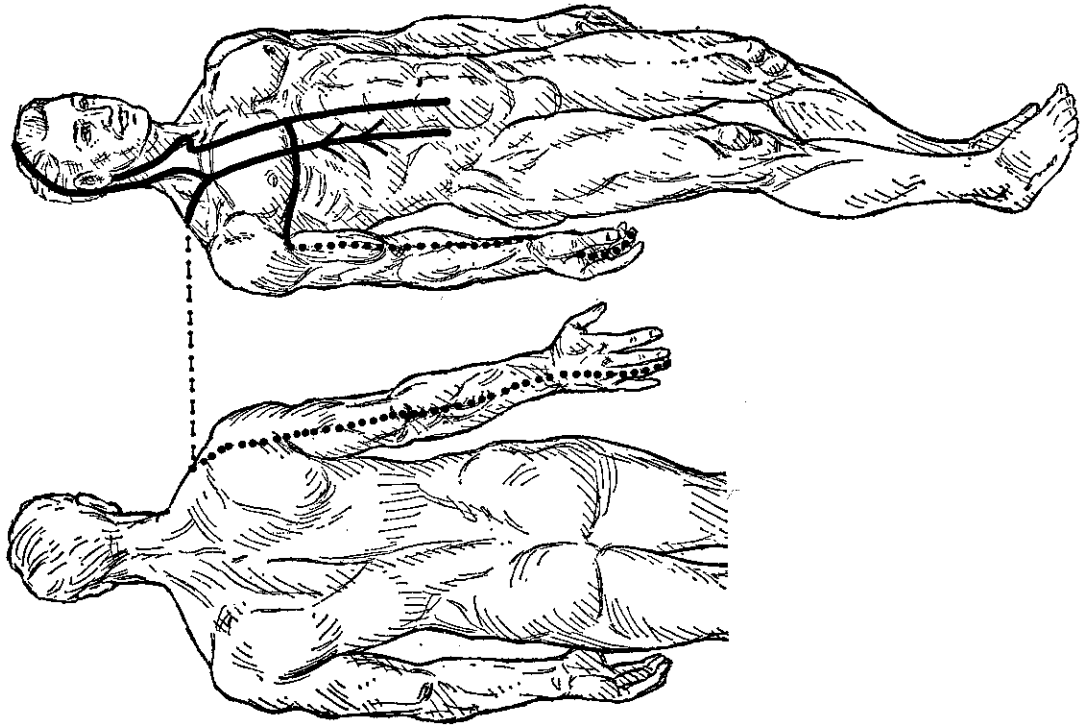
TRIPLE WARMER CONNECTING MERIDIAN

154

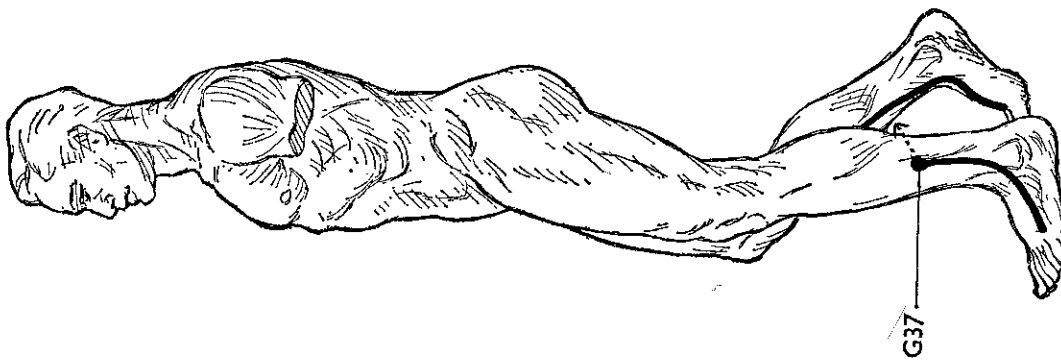
1717-18 x2=36



GALL BLADDER MAIN MERIDIAN

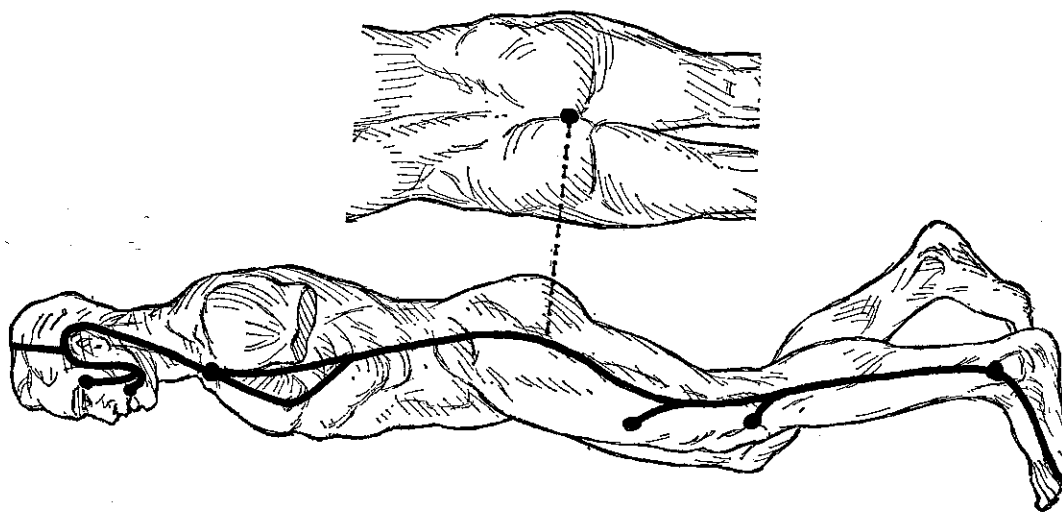


TRIPLE WARMER AND CIRCULATION-SEX DIVERGENT MERIDIANS



GALL BLADDER CONNECTING MERIDIAN

158

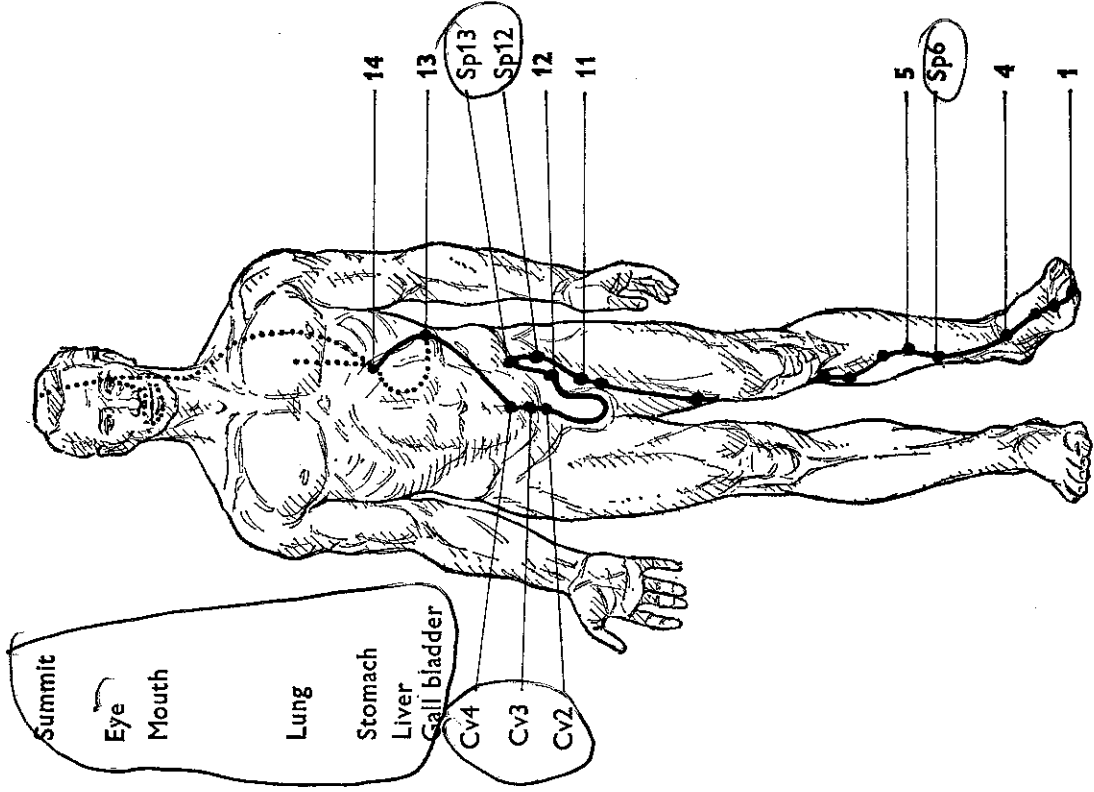


GALL BLADDER MUSCLE MERIDIAN

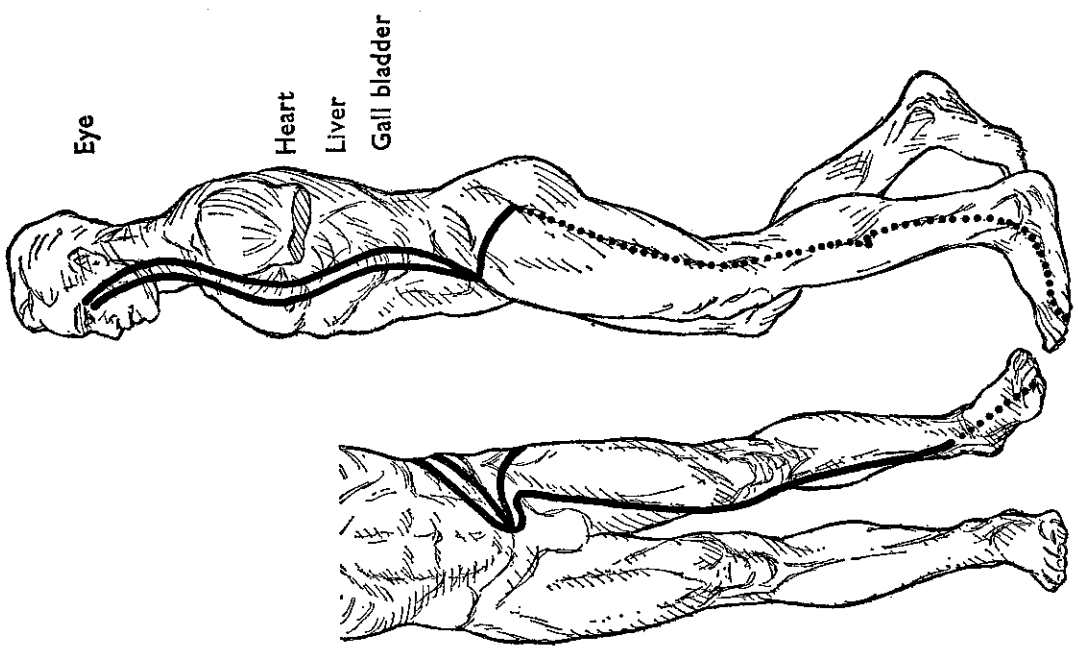
159

1+13=14 x 2=28

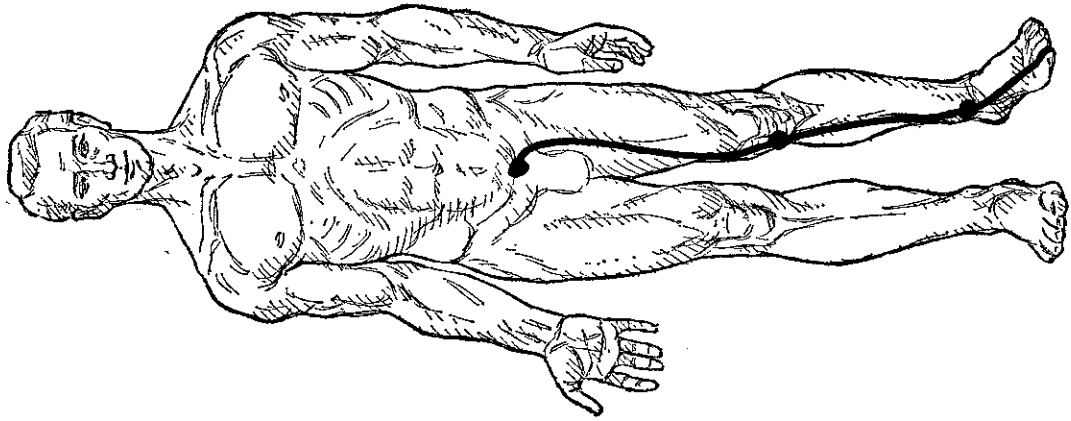
13



LIVER MAIN MERIDIAN

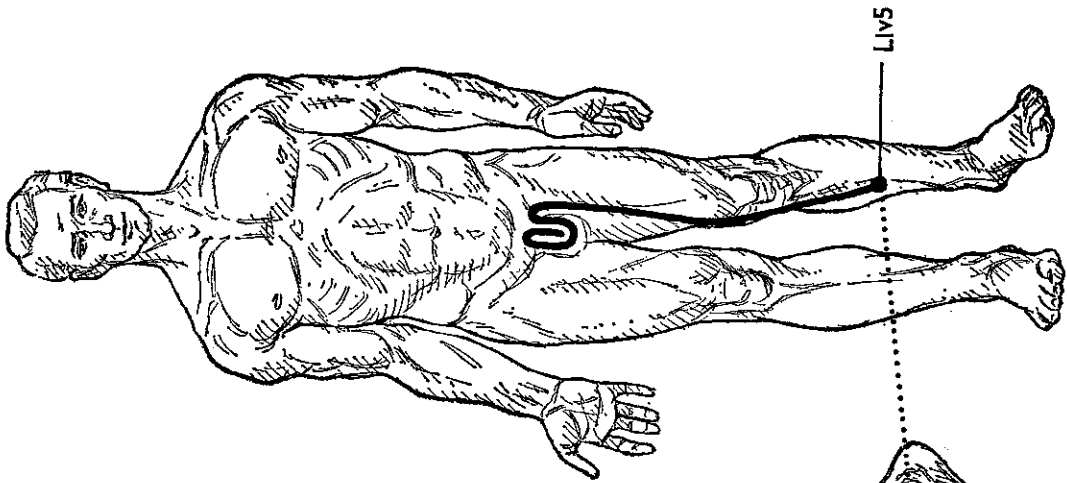


GALL BLADDER AND LIVER DIVERGENT MERIDIANS



LIVER MUSCLE MERIDIAN

163

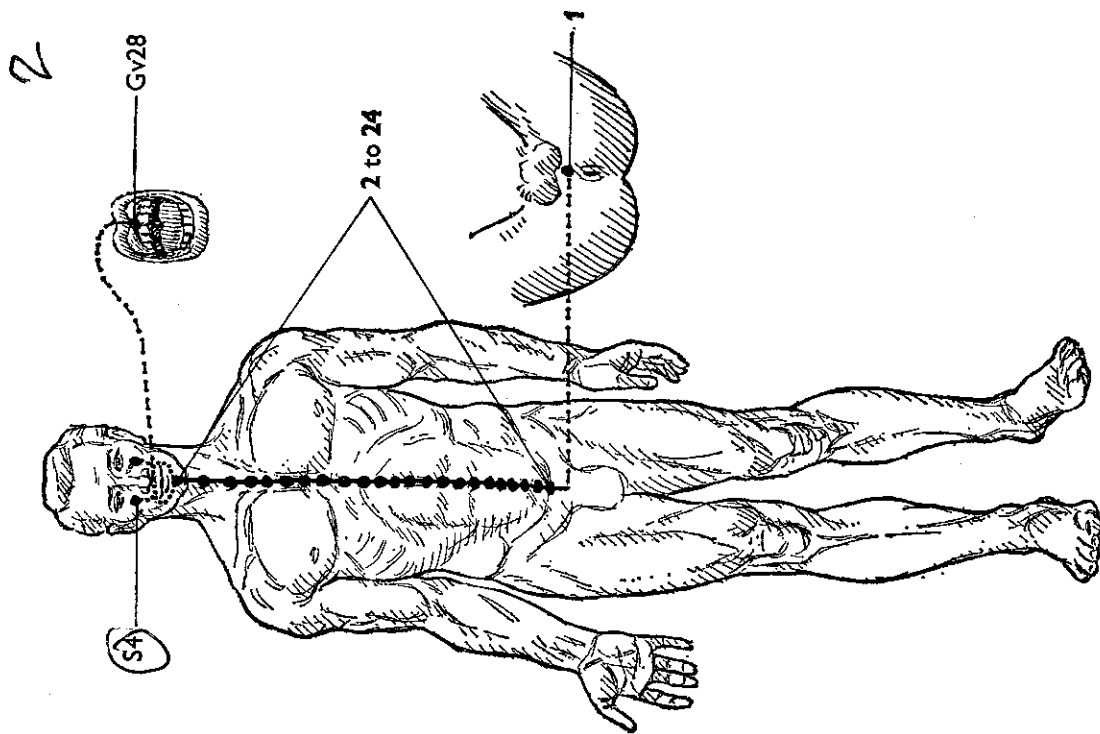


LIVER CONNECTING MERIDIAN

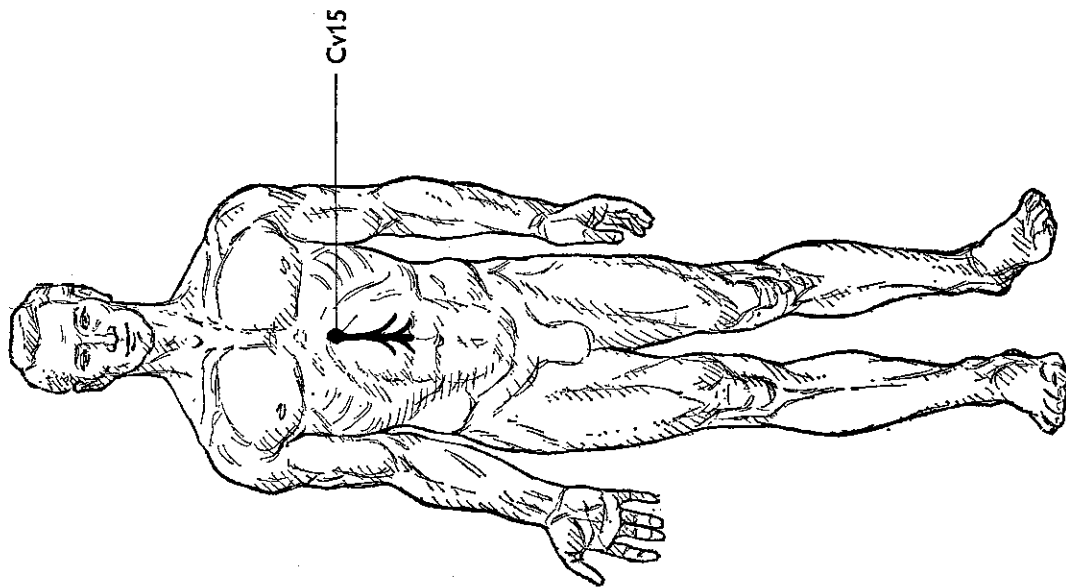
162



1+2=3

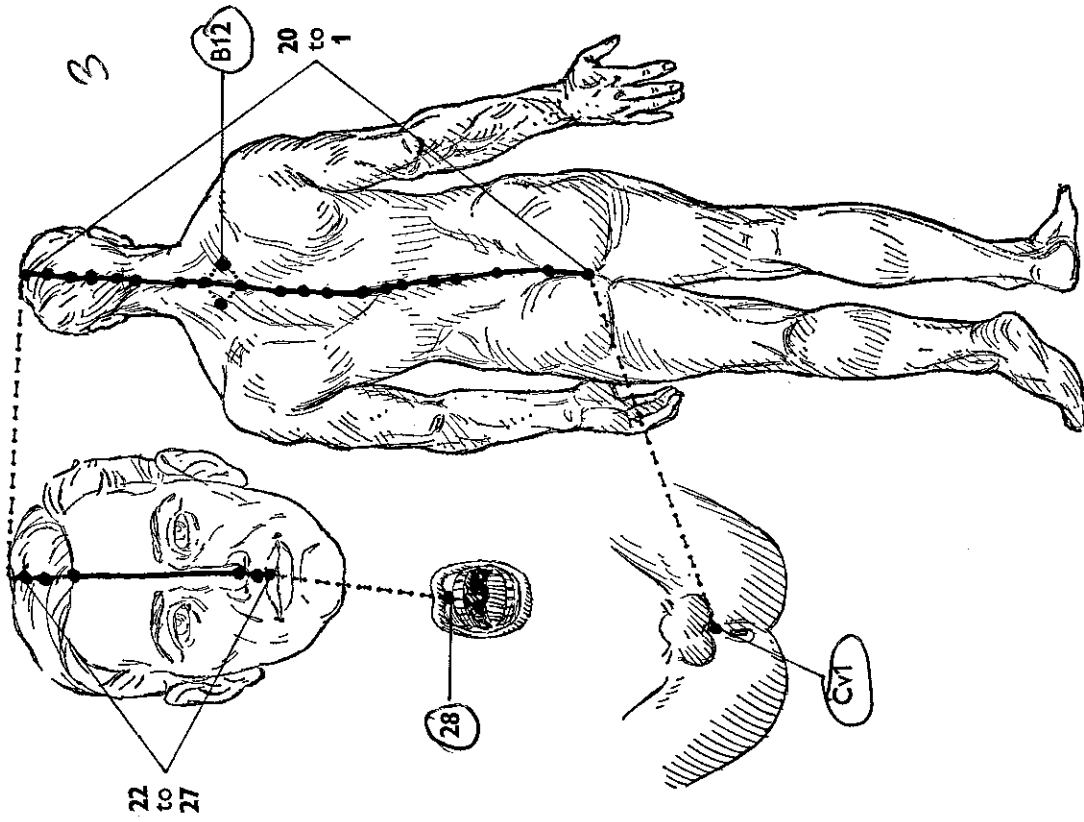


CONCEPTION VESSEL

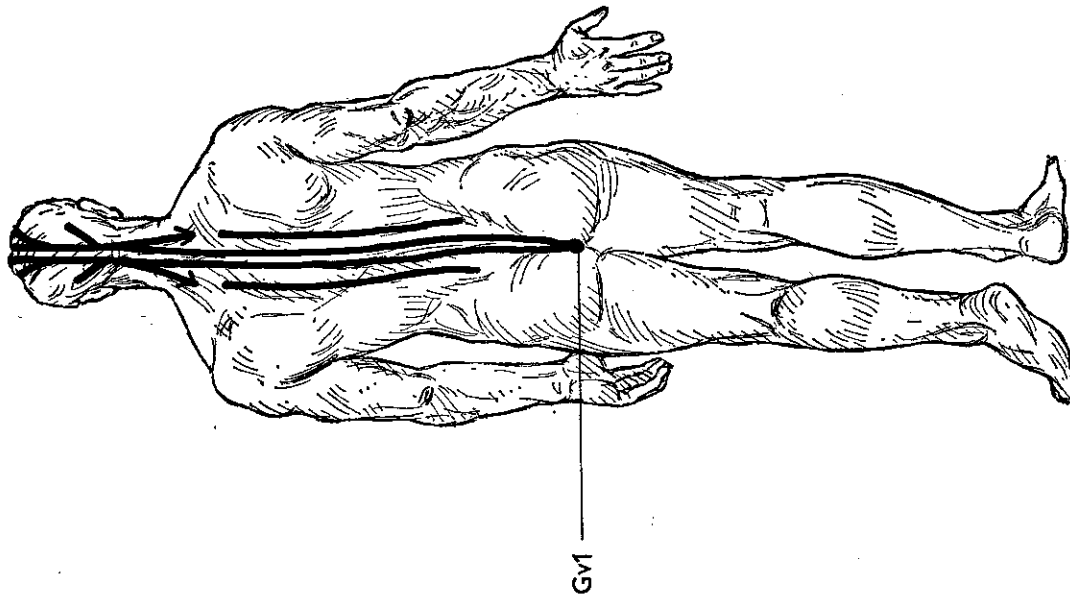


CONCEPTION VESSEL CONNECTING MERIDIAN

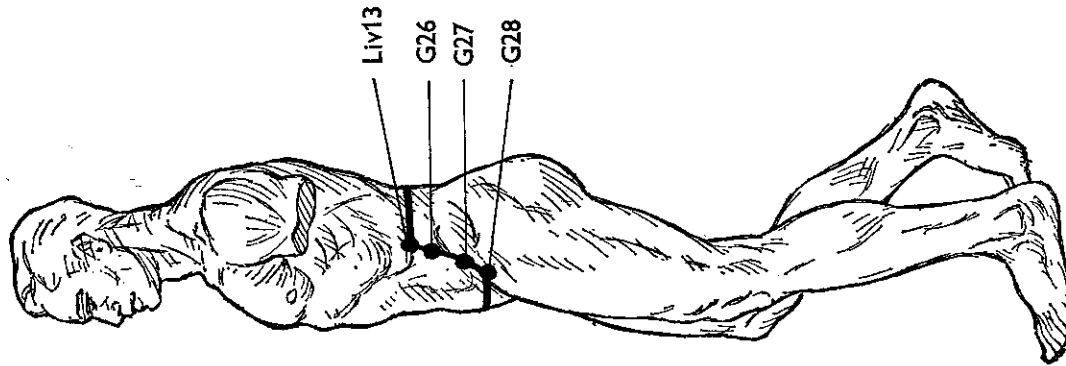
1+3=4



GOVERNING VESSEL

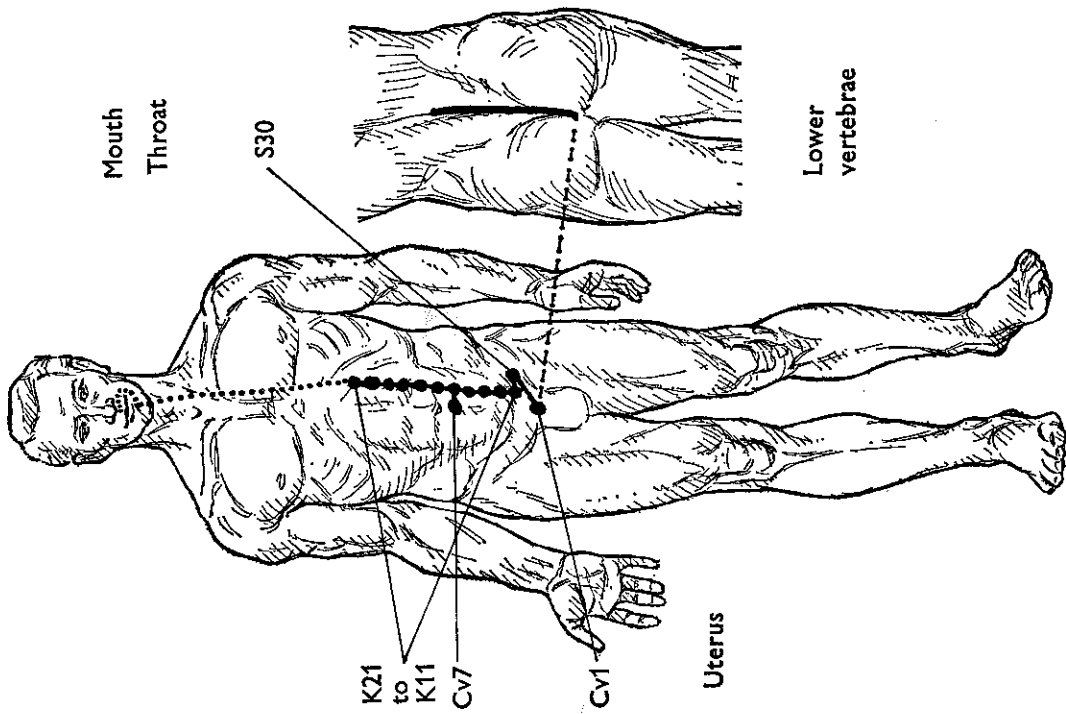


GOVERNING VESSEL CONNECTING MERIDIAN



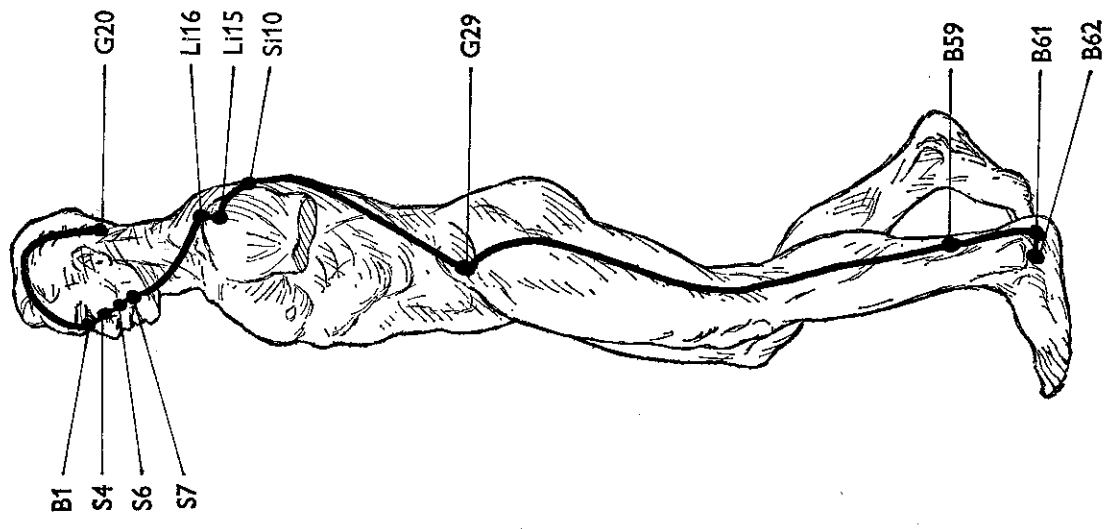
GIRDLE VESSEL

I69

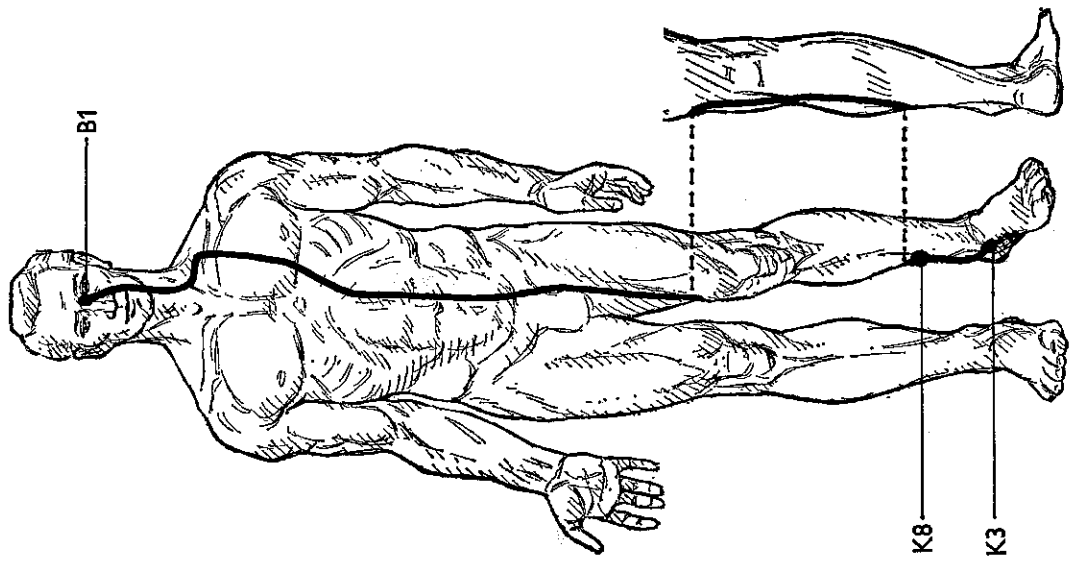


PENETRATING VESSEL

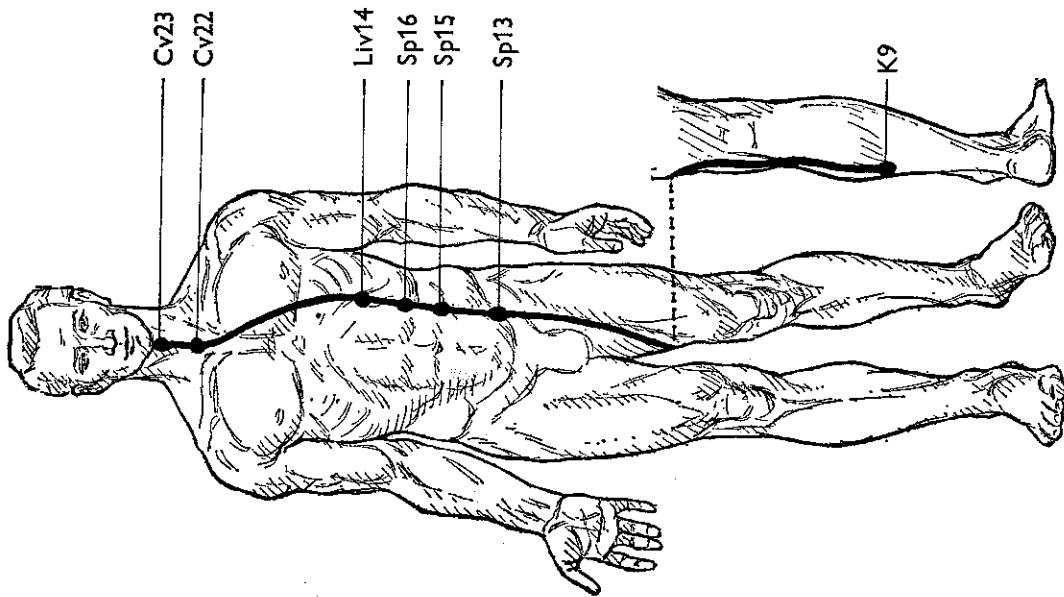
I68



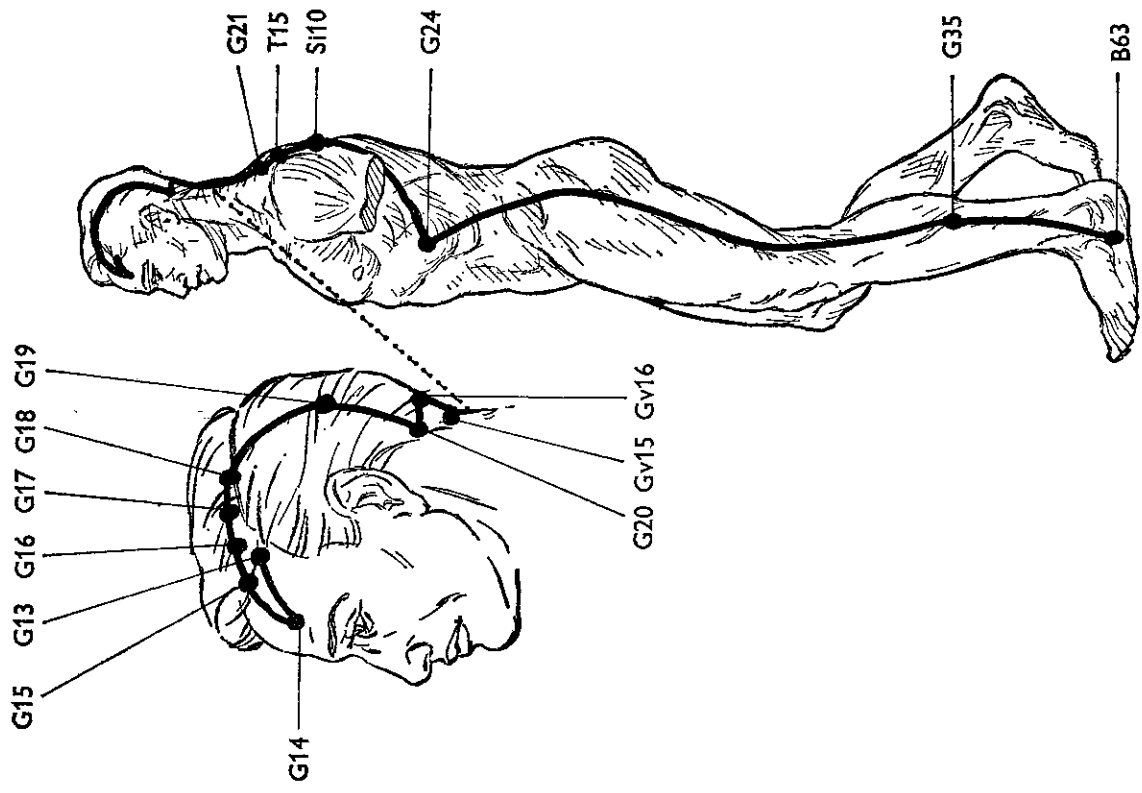
YANG HEEL VESSEL



YIN HEEL VESSEL



YIN LINKING VESSEL



YANG LINKING VESSEL

Nomenclature

Since this book was first published in 1964, there have been new editions of *Acupuncture: The Ancient Chinese Art of Healing*, *The Treatment of Disease by Acupuncture* and the *Acupuncture Charts* have been re-edited as *Atlas of Acupuncture*. In all three instances I have incorporated slight changes in nomenclature. In this reprint the 1964 nomenclature has been retained for the differences are either small or unimportant. If at a later date there is enough new material to justify a new edition, the appropriate changes will be made.

The differences are as follows:

1. The first eight points on the stomach meridian have been renumbered:

<i>Acupuncture: The Ancient Chinese Art of Healing</i>	} New editions
<i>The Treatment of Disease by Acupuncture</i>	
<i>The Meridians of Acupuncture</i>	<i>Atlas of Acupuncture</i>

S1	S8
S2	S7
S3	S6
S4	S5
S5	S4
S6	S3
S7	S2
S8	S1

2. The circulation-sex meridian (abbreviated Cx) is called in the 2nd edition of *Acupuncture: The Ancient Chinese Art of Healing* and in the *Atlas of Acupuncture* the pericardium meridian (abbreviated P)—as indeed it is in some parts of this book and in *The Treatment of Disease by Acupuncture*.

3. In some places the Chinese word 'lou' (or 'lo') has been translated into English—the 'connecting' meridian or point.

4. The Japanese word 'xi' has been replaced by the equivalent Chinese word 'hung', or the English 'accumulation point'.